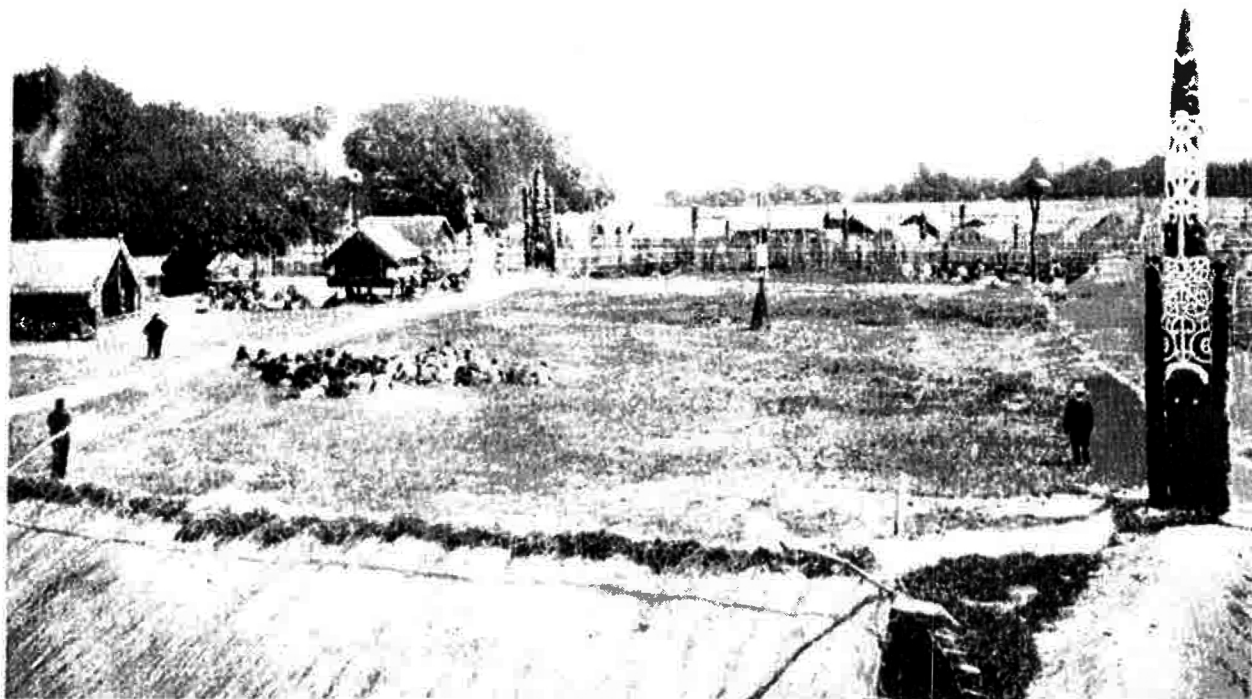


TANA TORADJA

FALETOLV - JOZ NICKI



MĀORI STOCKADED VILLAGE

Māori Stockaded Village - stockaded enclosure with Archway (Whare) Entrance. (See also photo of stockaded village in the background of the
Ancestral House in the foreground - See also photo)

SK' UTO RANA PĀTAKA

ADORNED DECORATED WITH FLAGS
AND ARCHES

Fig. 99. Front of *pataka*, Te Oha, The Abundant; Tourea, between Lake Rotoiti and Rotorua; erected by the Ngati Whakaue chief Haere Huka c. 1820-22. Length of threshold 4.01 m. Auckland Museum 152.

SK KSHATRYA MAORI PAGE 37

SK UTO RANA PATAKA
ADORNED DECORATED
WITH ARCHES
SK PITAKA GRANARY

SK RANA = RANGA!

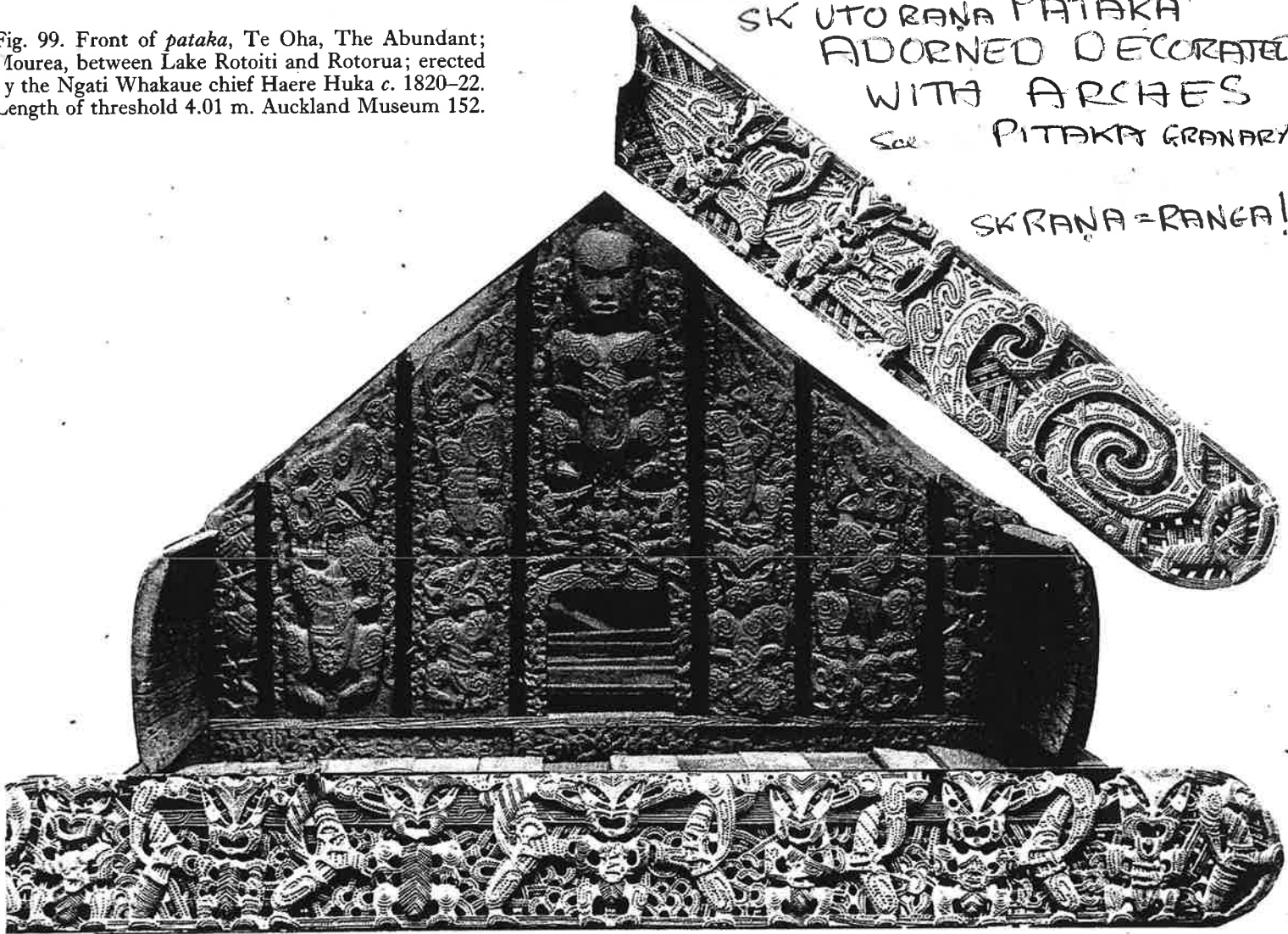


Fig. 100a. Two figures, 54 cm, of the series of thirteen carved on the side-wall panel of the *pataka* Te Oha (fig. 99).



Fig. 95. Side wall panels of Puawai o te Arawa (fig. 94) 4 m. (Photo. A.N. Breckon.)



Cause

1 PITA
PIĀKA
PETATI
2 RĀMATI

basket granary.
" " " "
To heap up cover
enjoy sexually.

3 YUJ
JOK
4 A-GAMA

Being in pairs 2 coupled.
for a long time
Not going unable to go a
mountain a tree
Not going -

A-GA
A-TRA

often a locative in this matter
in this place here at this time
above over

5 ADHI
ADHI-RUH
ADHI-ROP

ASCEND Rise above
place above Raise
Belonging to the Seven's

6 ARTAVA
from RITU
7 ADHI-BHŪ

a Superior
followed by a wife
To fasten
put on load.
to Escape.

ANU-DĀRA
ADHI / YAT
ADHI / YUJ
ADHI / YĀ
ADHI / VĀ

lay on place or Rise above.
Resting Place.
fast quick

8 Ā-ŚAYA
Ā SŪ
AVE U S-
VA S-

9 ADHY / HA
ĀN-ARSA
ANU RODH A

to speak on behalf of.
-RĀT-1 one whose gifts do not
Respect NO [hurt]

ĀRJUNA
ARKA

name of INDRA
Relating to the Sun.

10 ĀHNA
ISHMA
YUTI
YUDH
= YUT

a Series of days
the Spring. KAMA DEVA
uniting

] WAGINE WAR

11 PAINYA
 from PĪNA
 = PERU
 from PĪ
 12 PESHĀ
 PĪ, SH
 PĒSĀ
 PĪS
 PĒLĀ
 13 PRIT
 PŪ GA
 14 PŪ
 PŪNI
 PUSH PĪTĀ

fatness thickness
 swelling causing to swell; [Seed]
 pounding grinding crushing
 Carpenter

PŪ
 PŪY
 15 PŪT

Going
 BATTLE
 an assembly quantity mass
 purify cleansing
 " " "
 flowered Bearing odour of
 Death in Bloom
 Spotted of BAD TEETH
 PUTRID STINK
 Blowing hard Breathing

16 DAKA
 = ° UD
 JĀRI
 JĀA

WATER

TO BECOME OLD
 Asleep.

UPĀ-GAM A
 17 UPĀTI
 UPĀ-ATĪVĪ
 UPĀ-VDHĀ
 UPĀ/SVRI
 UPĀ/STU

arrived entered subject to
 to be added as a surplus.

TO place upon.

to join in singing
 praise. Sing

18 UPĀLAKS H
 UPĀ/PLU
 A SURĀ

to Look at observe.
 invade float on the surface.
 DIVINE also name of the SUN

19 A-SEV
 Ā-HVĀ-YA
 A-HVĀ-YA KA

dwelt abide
 A NAME

messenger

20 UPĀ-HADĀNA
 Ā-STHĀ
 UPĀ-STHĀ

SHIT
 an assembly UPĀ-STHĀ SHELTER
 STAND OR BE NEAR SIDE OF

21 Ā-HAVA
I NU
I NU HI

WAR
press upon have in
one's power
Master of anything

Note 20

Ā-STHA

AN ASSEMBLY

UPA-STHA

STAND NEAR BE PRESENT
STAND

UPA-STHA

SHELTERED SECURE
PLACE

UPA-STHĀ

STANDING UPON
BY the SIDE of NEAR.

MAHORS

TAH VA I TO

TAH UNA I TO

TA KI Recite

TAU Attach

TA-U Come to Anchor I TO.

U -TA Load or man a Canoe.

TAHAKI one Side

TAKA Company of person's

SK 656 PRA-CANDA = KANGA ITO,

SK 625 P1 TA
P1 TA KA
MARI PA TA KA
WAKA P1 P1

Basket base granary
Basket base GRANARY
Raised STOREHOUSE
PILE one upon another HEAP
[PILE]
HEAP collect into heaps.
TAPI get together the Remains of

TA KA
TA P1
TA P1 RI
TA PO RA

additional Supplemental
cook in a basket
clump group flock.

SK 420 PA
PA TA KA
TA NK

RAISED STOREHOUSE
[from 'KA' SEAL] 'KAYATI' [SEAL UP] i.e. etc]
[SHUT COVER

SK PIT
PALI PET A T I
MARI PIT - I
PIT - OI

TO HEAP TOGETHER
PUT SIDE BY SIDE ADD
TIE in a BUNCH

PAL MARI PET A TI
PE
PE PE
PE HA
PE HU
PE KE TUA
TA KA
PE RU
PA TA KA
PET - I
WAKA PET - I
PETI PETI
PE TO

TO HEAP TOGETHER
ROE of FISH
Soft mass cake.
Bark peelings husk.
ball of rounded TARA
Supplementary load carried on
HEAP (the Back)
fullness about the eyes
storehouse
HEAP UP
Collect gather
Jellyfish
Be Consumed.

SK 655 PRA - GE

at dawn at day break tomorrow
next day future [morning]

MARI NE KU NEKU
HA NGE NGE
RA WHITI
SK PRA

DECLINE as the SUN
powerless weak.
SUN RISING!
before forward in front esp verb / MOTION

SK267
P

RAM
RAMATI
RATA
RATA

Enjoy carnally, make happy.

loved sexual union

MAORI

KUJITA
KUHU
KUHHA
KUNE
KUHAKUHA
KUI
KUIKA
KUMU
KU

LASCIVIOUS MURMUR
THRUST IN INSERT
GASP
URGE PRESS
PANT
Woman.
DESIRE
BUTTOCKS ANUS TAIL
Make a low articulate SOUND

RA
RATA
RAHI
RAM

WED
FAMILIAR FRIENDLY
LOUD
P. MUL
as YOKEO ITO See.

SK
MAORI
TA

RA
RARA
RANGI
TANGI
TANGI

P. MUL M. VIRILE
P. MUL M. VIRILE
Seat of affections
MENSES
HUSBAND

RAPA
RAPON
RA-ULA
RA-U

P. MUL [TANGI]
first Pregnancy.
THEY 2!

KAI
WHAKA

RAWE
TARA
TAIPU
TAKAWAI
TAKINI
TAKOHE
TAMAHINE
TAMAU
TAMU
TATEA

COURTEZAN
effecting a Union
Sexual Desire
Retreat
ROBE object of affection
HYMEN
at Leisure
female.
love ardently
PUD MUL
Semen.

SK 854	Y	UJ	Being in pairs or couples comrades N ^o 20 COMPANION YOKE FELLOW
MAORI WHAKA		U - NUA	DOUBLE CANOE keep together as a body of men.
		U - NU	TEAT Give drink to
		U - NU ORA	object of intense affection
WHAKA		U - RE RUA	SHARK!
		U - RU	ALLY AVENGER
		U - RU	associate oneself with
		U - RI	offspring descendant
		U TA	LAND opposed to Sea INLAND opposed to coast
SK MAORI		TA	Earth
		TAIAO	world. district
		TA EKAI	worn out soil
		U - TA	put persons on board a canoe.
WHAKA		U - TE	TEND CARE for
		U - TO	Revenge enemy.
		U - TU	Return for any thing ransom reward price reply.
		U HA	female woman.
SK 856 = Maori	J JY	OK	FOR A LONG TIME g SVAR-ADI
		OK	
		OK E	ill ailing invalid
		OK -I-OK-I	REST PAUSE
		OK -I-OI	= HOKIOI/HAKUAI an extinct
		OK -A	branch lined descent [bird]
		OK -A	fish split open for DRYING
		OK -A-OKA	STAB REPEATEDLY
		O - NAMATA	from ancient times
		O - MEKE	fern Root prepared for a journey
WHAKA		O MOOMO	use sparingly husband tenet
		O HI NEA	childhood youth [an invalid]

SK	A			neg pref.	
SK4	A-	GA	MA	NOT GOING UNABLE TO GO	
				A MOUNTAIN ^o A TREE	
MAORI	MAU	NGA		A MOUNTAIN	
		NGA	HERE	FOREST	
			MA	UNGA MOUNTAIN	
			MA	U FIXED REMAINING IN POSITION	
			MA	TE DEAD	
NOTE			MAU	TARINGA EAR PENDANT	
WHAKA			MAU	FIX THE ATTENTION ON	
				BE INTENT ON	
				BE ESTABLISHED	
=SK	/PAL		EA	RINGS of a BHIKKHU IN	
				ABOVE SENSE	
				See non acceptance of BHIKKHU	
				WITHOUT an EARING	
			MA	NEA branch of a River is GOING	
SK	-			NOT GOING	
MAORI	A-	GA			
		NGA	-RE	Send urge	
		NGA	-HU	hunt with dogs.	
SK U	A-	GA	MA	not going unable to go	
MAORI			MA	-NGA-MUTU LEFT BEHIND DESERTED	
SK	A			neg prefix	
			MAU	NGA MOUNTAIN	
	A-	T	RA	often used in sense of locative case AS MIN	
				in this matter in this respect in	
				this place here at this time there then	
	A	T	RA	A DEVOURER DEMON	
	A	T	RA	from AD	[ASURA]
	A	T	RA	food.	
	A	T	RI	from AD a devourer	
MAORI	A	T	A	PO Dawn	
	A	T	A	ITI early dawn,	
			RA	SUN as an ASURA!	
			RA	TO be distributed	
	A	T	AR-AU	Moon moonlight [as food.]	
			T	AMI food	
			T	R-I share portion offering to a God	
WHAKA			T	ARA awake consult	

*

SK 20

A DH I

pref expresses ABOVE OVER; ABOVE FROM
TO RISE ABOVE ASCEND MOUNT [ABOVE]

SK 21

ADHI - R UH

CAUSE

ADHI - R O PAI AT I

TO RAISE PLACE ABOVE

MAEPA

ATI

Clouds threatening wind; Rain

A DH I

pref expresses ABOVE OVER; ABOVE FROM
ABOVE, FROM FROM the PRESENCE OF
AFTER FOR INSTEAD OF
VED OVER ON AT IN COMPARISON WITH
+ see over upon concerning

AD HI - AD HI

mid ON HIGH JUST ABOVE

R UH - TA

Large branches of a tree

R UA

Abyss from which heavenly
bodies Rise

R U NEA

top upper part Up upwards
up above over upon.

R U PE

LINTEL of a DOORWAY

R U R U HAU

STORMY.

R U - HI

a star near ANTARES

SK

[A D - HI - RUA]

R UA WA HI

A star in the 9th month

R UA WA HETU

a circular depression at the
top of the POURO to Receive the
end of a HEKE in a house.

R UA KI

VOMIT

WHAKA

R UA

feeding grounds of birds

R O T O

places inland or up river

R O U

a long stick used to Reach any thing

R O R EA

TIDE BORE

R O P - U

CLUMP of trees HEAP

R O R E

Rain bow

R O H E

ROHE firebrand used as a torch

T I R A

stars of Orion's belt RAYS BEAMS

T I U

MILKY WAY SOAR tower

T U H I

Dawn
Smoke.

A A A -

T O

THATCH of a HOUSE

A A A

T I

CLOUDS threatening WIND; RAIN

A A A

T I

a pattern in painting the
RAFTERS of a HOUSE

*

*

SI-131
from

AR TA VA
RIT U

BELONGING TO the SEASON'S
or PERIODS of TIME a flower
SEASONABLE MENSES

AR - A

way path means of conveyance

TU PU

SHOOT BUD GROW

TA U

Cycle of Season's count
MENSES

TA HE

TA HI

one one; another altogether

TA MA TA MOON ON 6789 NIGHTS

- WA

TIME SEASON

TA MA TA

Cultivate the SOIL

RIT - E

Corresponding in position or

T U - KUMARA

CLOUDY

[Number

Balanced by an equivalent

Resemble compare with

be compared with

RD IT - E A

performed completed fulfilled

IT E

TATOO TU manner sort

TA

TA RI

WAIT Expect

TA EK AI

WORN out SOIL

WA NA

BUD SHOOT SEEDLING

WAI

Memory [TUPU shoot Bud]

U - A

RAIN

TA MA TA

Cultivate the SOIL

TA KA

Came round as a date or

TA KI

Recite [period of time]

TA KI TA KIO

stimulation of CICADA

TA KI WA

TIME PERIOD

TA KI RA

MOON on 19th DAY

TA KA WA

fruit of KAWAKAWA ITO
child

TA MA TI

South

TA I TO NEA

Yesterday

TA I NA HI

a marriage union till death
old woman,

TA RA

first fruits

TA I KUIA

Gather fruit of a tree

TA I TA I

TA HORA

wife

MOENGA

SK 21	ADHI	BHŪ ✓ BHŪ PU PU PU	NE NEA KORERO KENEIA	a Master a Superior Clever intelligent ORATOR speaking with authority Skilled in Repository vessels
NCA	RA	-HU		LEADER COMMANDER in
SK 19	ADHI	HA	RA	tending downwards lower Region lower part PUD MUL LOWER LIP PUD MUL [LIP]
MĀORI	T	A	RA	
	T	A	HE	menses abortion
	T	A	IAWA	VAEINA
	T	A	IHEMAHEMA	Genitals of either Sex
	T	A	ITUKU	Stoop Bend down.
	T	A	IHEKE	Descend go down.
	T	A	ME TAME	Move the lower LIP
	T	A	MU	PUD MUL
			RA MU	PUD MUL [RA WED]
			RA RO	Below down below underneath
SK 22	ANU	D A	RA	followed by a wife [underworld]
SK 21	ADHI	-✓	YAT	TO FASTEN
MĀORI			AT-O	THATCH a HOUSE
SK 20	ADHI			above over upon from above ITU
SK 21	ADHI	-✓	YUJ	PUT ON LOAD
MĀORI			U-TA	load or man a canoe.
SK	ADHI	-✓	YĀ	to Escape
MĀORI			A	drive urge compell as far as [until]
SK 23	ADHI	-✓	ŪH	to lay on overlay TO PLACE UPON TO RISE ABOVE
MĀORI			Ū	Reach land arrive by water
			UH - A	female.
			UR U	Reach a place.
			UR U	arrang that stones in a HĀNEI
			UR U	Arrive Appear above the Horizon
			U	ENUKU Rambou
			U	strike home/weapons

			Seatd feelings thoughts RESTING PLACE seat PLACE RECEPTACLE VESSEL of the BODY
SK157	Ā	ŚAYA	
ie MĀPORA	RA	KTĀ - ŚAYA	'the receptacle of BLOOD ie] [the heart]
		KĀ - RUKARU	
		AMĀ ŚAYA	STOMACH
MĀPORA		HAI	at in on to of place.
		= HEI	
		TA - HE	MENSES ABORTION
		TA - E	Color juice of plants isu memory recollection
KU	-MA	HA NA	RED
RA		TA	PAINT
		TRAKOTOR RANGA	Receptacle position [site]
		TĀ - KOU	RED OCHRE
		RA NA	PLEASURE WAR [not pleasure]
WHAKA	-	TA KOTO	place plant lay down.
		HA NA	OVEN
		HA	taste flavour
		TA KUANI	stones for a fire place in house
	RA	KAI	adorn Bedeck
		TA O	2nd person claim in battle
MĀPORA 157SK AVE α	Ā	ŚU	RI - RIN - O WHITELPOOL [RIPOR go travel] fast quick going quickly rice Ripening quickly in the]
	U	S	[MĀPORA RIN - GA WEDON [Raining Season]
	U	S	[MĀPORA KARI RUSH ALONG KAKARI BATTLE
	Ā	ŚU - KĀ RIN	doing anything quickly smart]
	Ā	ŚU - GA	going or moving quickly swift [active]
MĀPORA		KĀ KAMA	QUICK [SUN ARROW WIND
	Ā		drive urge compell [RIRI BATTLE]
	NGA	HU	hunt with dogs. HUATARE PANT
	U	IRA	Lightening GLOW [GASP
	U	RANGA	Glow of Sunrise or Sunset
	U	POKOTAU	Surprise attack HUKI Rush upon
	U	RUHA	RUSH VIOLENTLY drive force [DAWN

SK 23 ADHYA JHA
 per -AHA
 MAORI AHA
 HAHHA

to speak on behalf of.
 who of what use do what to
 of what use, TO
 seek enquire about procure

SK 26 AN -ARSA -RATI
 MAORI RA TO
 TIRI

one whose gifts do not hurt
 distribute serve round
 share portion

SK 37 ANU J R UDH
 ANU -R OD HA
 MAORI A R O HA
 MAORI R OHI
 WITAKA R O NEO
 R ON GOA
 R O PA
 R O P I
 HI KA
 HA KORO

adhering to Lawing
 fulfilling the wishes of anyone.
 Respect Reference of a Rule.
 Love
 mourn,
 inform cause to hear listen
 attend to OBEY
 apply medicines to
 servant
 person, P. MUL
 Capulate
 KORO father

! SK 131 AR JU NA
 SK AR KA
 AR KI
 Maori AR -A

NAME of INDRA = ARJUNA
 Relating to the SUN
 as a SON of ARKA the SUN
 way path means of conveyance.
 glow of Sunrise
 MOVE TO & FROM
 move in a certain Direction
 come go
 Regular sequence of events
 Be set on fire
 LOOK BEHOLD! [of sunrise]
 proceed. [HURO!]
 Regular Sequence of Events

U RANEA
 NA K NAKS
 NA KA
 NA U
 NA WAI
 NA WE
 NA NA
 NA WAKI
 NA WAI

SK649 PAIN YA
 from P IN A
 from P ERU
 PY AI

FATNESS THICKNESS
 Swelling or causing to swell SEED

MAORI
 TU PERE
 SK PERU
 MAORI PERU

Ejaculate
 Swelling or causing to Swell.
 FULLNESS about the EYES and
 lips when a person is Angry
 BE Consumed [i.e. causing to SWELL]
 heap up.

PETO
 PETI
 PENAIKA
 PIPI
 PIPI
 PIP
 PIP
 PIERE
 PIERE
 PIHI
 PIHAU
 PIKOPIKO
 PIRAU
 PEPE
 PAUKU
 PAIHERE
 PAIKA

ROE of fish
 half grown
 Young of land birds
 fielding FLABBY
 Gum of trees
 flow of the tide
 Desire earnestly
 GAPE as a WOUND
 Spring up begin to grow
 Break wind
 fern Shoots
 Decay Death PUS
 soft MASS CAKE
 SWELLING inflammation
 Bind together in Bundles.
 ROOT of a tree

SK649 PA IN YA
 MAORI PA
 PA UK V

FATNESS THICKNESS
 HEAP CLUMP
 SWELLING

WHAKA

IN-E
 INEINE
 INATI
 INATI
 INGO
 INATI

COMPARE MEASURE
 Equal to like
 portion share at a feast
 Divide into portions
 DESIRE
 EXCESSIVE LARGER THAN

SK648	PE SH A	POUNDRING GRINDING the ACT of POUNDRING CRUSHING a GRINDING
✓	PI SH LA	Small part of anything
MĀORI	PE	CRUSHED MASHED
WHAKA	PE	SOFTEN MASH
	PE H - I	FIRESTICKS RUBBED TOGETHER TO PROCURE FIRE
	PE H - U	MASH POUND Ball of pounded TARO
	PE H - U	EXPLODE
	PE RE PE RE	Clear off weeds
	PE TI	heap up.
	PI AU	IRON axe.
	HA NI	weapons
SK 649	PE SA	architect CARPENTER
✓	PI S	
	PE SA NA	well formed beautiful
	PE SA LA	artificially formed adorned decorated
MĀORI	PI AU	IRON AXE
	HA NGA	expert skilful clever
	PI H - A	Make build
SK ✓	PI S	a pattern of TRUSTING
MĀORI	PI TAU	perforated Spiral Carving figure head
	PI WARI	Beautiful [of a canoe]
	PE U	part of a Bird Snout
	PE RA	do in that way
	PE KE RA NEI	4TH FENCE of PA cloak with ornamented border a Raised stage for fighting
	HA NEA	make BUILD
SK649	PE LA	GOING small part
MĀORI	PE RE	GO
	RA	SAIL
	RA NGA A	RUSH CHARGE

SK655

P RIT

BATTLE CONTEST STRIFE

P RIT

TA NA BATTLE ARMY

[ATTACK]

P RIT

T - SUSHU BATTLE

to be active

MARORI

P IR-

1 HONBA KEEPING CLOSE

MARORI

[PI PI]

young men in Vanguard of an

SK

[PR 1]

to protect

[Army]

MARORI

PI AU

IRON AXE

TA HUNA BATTLE

TA U ATTACK

RI-RI BATTLE

HUI Congregate come Together

[CAPTURE]

HUKA last man elain

WHAKA

A

RI KI

invading army

P IR-

O

Defeated beaten Victory

P IT -

ONGI ONGI

method of using a spear

RIT -

E in Readiness prepared.

RI WHA

Defeated

TA

Beat with a stick

SK651 of

PU GA

any assemblage or combination

PU NJA

of BODY of PERSONS MULTITUDE

NUMBER MASS QUANTITY [in one place]

MARORI

PU

a country COURT property

WISE ONE TWICE TOLD

CLAN HEAP STACK

See

PU RE

=> in this sense's

PU A

a figure in HAKA

PU HA

CHANT

PU KAI

CROWD

PU NA

Ancestor

PU NEA

JOINT falling flowers of KOWHAI

PU NI

Company of persons

NGA I

Clan prefix

NGA RA HU

war dance

RA

NGA MARO

Army in Battle Army.

SK 640 PU
 SK 641 PU NI
 MAORI PU RE
 PU NA
 WHAKA PU TA
 PU NI

purify discern think out freed from.
 purifying cleansing SPOTTED
 Rites [OF BAD TEETH]
 Spring of water
 perform ceremonial cleaning from TAPU
 a Company of persons
 an incantation
 effect by the PUNI RITE
 See
 SING

TA PU
 PU ORC

SK 640 PU SH PIT A

flowered bearing flowers in Bloom
 *exhaling an odour of approaching
 death manifested fully developed
 FLOWERY as Speech. IN BLOOM
 Flower bearing fruit or flowers
 product progeny
 VIREIN

MAORI PU A
 PU HI

WAHA PU
 PU HA KE
 PU A
 PU AT AATA

ELOQUENT of SPEECH
 FULL to overflowing
 FLOWER SEED [ie fully developed]
 clear transparent FULL of
 HOLES or SPACES
 Spotted of bad teeth
 Rite

SK MAORI TA PU
 PU NI
 PU HI
 PU AKI
 PU HI HI

See
 VIREIN
 Come forth show itself
 OPEN OUT
 Ray of sun plumes or tail &
 wings of a Native KITE
 Brush on the tongue of a TUI
 PUTRID STINK

SK 641 * PU Y
 PU HA NA A
 PU KA RA KARA

FRAGRANT
 PI HI shoot sprout Spring up begin to grow
 PI RAU DECAY DEATH PUS
 PI RO STINKING
 PI WARI Beautiful

SK 601	PŪ	T		an oramat expressive of BLOWING or HARD BREATHING
WR for MARI	PHŪ	ŪT		
	PŪ	T-	Ā I HU	NOSTRIL BLOW GENTLY flute <u>GUN</u> (Bubble up Boil)
	PŪ	PŪ		Rough SEA
	PŪ	AHEIHEI		BE EXHALED
	PŪ	AKI		Cool Breeze.
	PŪ	ANĀI		BE BLOWN BY the WIND
	PŪ	AWHE		GASP
	PŪ	HA		SPOUT as a WHALE
	PŪ	PUHA		Valcance.
	PŪ	IA		Stinky
	PŪ	HORO		pass through in or out
	PŪ	T-	A	
	PŪ	T-	A	NOSTRIL
	PŪ	T-	IHI	BREAK WIND
	PŪ	T-	O RORE	Jet of Gas from burning wood.
Ā	PŪ	T-	OTO	A HORN [sea shell]
	PŪ			SQUALL GUST

SK 665 = MAORI
 DAKA UD
 TAI
 TA E
 TA HE
 KA TAO
 U
 UT - A
 TA TEA

WATER
 SEA
 JUICE of plants
 menses trickle flow see.
 WATER
 Reach land arrive by water
 Load a man a CANOE
 SEMEN

SK 429 = MAORI
 JH RI
 J RI
 HI RI NAKI
 WHI RI NAKI
 RI O

TO BECOME OLD
 OLD AGE
 WITHERED DRIED UP WRINKLED
 [be diminished]

SK 429 MAORI
 J HA
 HA MOE MOE

ASLEEP
 SLEEPY DOZE

SK 212 P. SK 194
 UPĀ - GA TA
 UPĀ - GA MA
 UPĀ - GĀ
 UPĀ - GĀ TI
 UPĀ
 NGA RE
 NGA HU
 TA NGA
 HA ERE MA I
 MA I
 TI A
 TI RO
 NGA TA
 TA MA

ARRIVED ENTERED INTO A STATE
 OR CONDITION AGREED
 BURDENED WITH SUBJECT TO OCCURRED
 arrival approach agreement [HAPPENED]
 [MAORI U-NGA - SEND URGE]
 COME NEAR GO TOWARDS RUSH UPON
 towards Near to by the side of together with
 Direction Towards [under down
 Send urge U Reach land arrive by]
 hunt with dogs. [water]
 Be assembled.
 welcome [TINAKU CONCEIVE]
 HITHER TIMA cultivate soil
 TI A mother [PĀ COITUS] U TEAT
 TI RO Company of travellers UNGA Send urge
 Man in Karakia
 + TAUIRIA AUA KETE TAUNGA ITO

SK213 UPĀ TĪ TO BE ADDED AS A SURPLUS
 P [UPA-ATI] ✓ i
 MAORI E TI THICKEN IN COOKING
 = E TE
 TI NA KU Conceive
 TIR - 1 Show portion
 HU - 1 PUT or ADD TOGETHER
 IAT - 1 OFFSPRING
 > I - PU IPU BAIL OUT A CANOE!
 [read as a Surplus!]
 I - WI STONE of a FRUIT BONE

SK213 UPĀ-√D HĀ [TO PLACE UPON PUTON]
 A D Ā DHATI [TO SEIZE LAY HOLD OF]
 MAORI TĀ Seduce a woman.
 TĀ Beat with a stick TĀTOO
 TĀ NEO Carve fashion paint TAKE HOLD of with the HAND
 HĀ O Capture a fero
 HĀ NEĀ make build
 HĀ E Cause pain
 TĀ KĀHI Ravish a woman,

SK211 UPĀ / S VRI TO join in singing
 P S VĀRATI SING
 MAORI PAO H U - 1 join together
 RA MENE Be assembled.
 RANGI Strange tune
 O RI ORI CHANT
 TIRA CHOIR
 U ME RE CHANT
 WA IATA Song

SK210 UPĀ JS TU P STAUTI INVOKE IN SONG-PRAISE
 MAORI PAO TUPERE = PURE. [TUHINAPŌ Sacred place
 SING

SK 161 A-ISE V inhabit dwell abide
 A-SE VA NA ABIDING IN enjoy sexually

MAORI A
 = HE I }
 HA I } IN ON AT of place.

WHAKA WA definite space area time }
 WA HINE WIFE } season }
 WHANA U family group be born }
 WHANGAI feed nourish rear maintain }
 NANA REST REMAIN }
 WA I HO REST REMAIN }
 TI NA KU Bed in a garden concrete }
 TA HU NA Land in cultivation }
 HA NA make build people }
 HE A what place? }
 HE I NA parent ancestor }
 HE KE MIERATE }
 HE MA at peace }

SK MAORI A V HE U clear off brush wood ITO
 SE V dwell abide }
 U Reach land. firm fixed ITO

SK 163 MAORI A HVA YA A NAME
 A of belonging to possessed by
 HUA Name call by name.
 IA he she it
 WA make a formal accusation

SK MAORI A HVA YA KA A messenger a carrier
 HUA Name call by name ITO
 IA he she

WHAKA KAI WAE WAE MESSENGER
 KAU Rise as heavenly bodies.
 KA KAU Disclose make known.
 KARANGA CALL SUMMON

Māori
See SK
SK 211

T A HUA = MARRAE = SK A-STHA ASSEMBLY
STHA - IN MāORI COMPOUNDS of TA / HA NO
UPA-HA DA NA the act of DISCHARGING
EXCREMENT UPON

Māori

TA SHIT
HA MU TI SHIT
HA U NEA STINKING
HA WA SHIT
HA KO Shovel see LATRINE

SK A-S THA AN ASSEMBLY [i SHOVEL!]

SK UPA JS THA stand or be near be present stand

3rd plus UPA - S THESHA by the side of. place oneself before
in order to ASK approach apply.
to come together meet with
FRIENDLY WITH CONCILIATE
attend serve worship

UPA - S THA the part which is under, sheltered
place secure place

UPA - S THA STANDING UPON standing
by the side of. near being near
Be at anchor

Māori

TA U
TA HUNA = MARRAE
TA carve fashion paint tattoo FRIEND
TA INGA place to bail a canoe.
[STHA] TA TA Bail water out of a canoe i.e. =
SK STHA > STAND By the side of 100

TA HAKI ONE SIDE

-HA KUI MOTHER

TA HU NA land in a cultivation

-HA KOROA FATHER

TA U Lover

TA H VA heap of food at a feast

TA HUNA Beach, sandbank.

TA I MAU Retracted

TA I WHANA place locality

TA KA Company of person's.

TA I WHENUA permanent abode.

TA KI Recite

WHAKA

TA RA invoke consult.

HA NEA property people [HAO fortress]

SK163 MĀŌRĀ	A - A	HA VA HA HA WA HA O
SK167 Zgmp and	IN IN IN	U U U HI
MĀŌRĀ WHAKA	IN IN IN	U U A HI
SK MĀŌRĀ	IN I N	U HI HI UI

O → AVA
 challenge war battle
 of belonging to 100
 Shout at to drive away.
 accuse.
 Capture a fort

press upon infuse strength
 remove to have in one's power
 TO be lord or master of anything
 have the disposal of.

DRINK
 give drink to
 portion share of food at a feast
 with in possession of.

POWER AUTHORITY RANK
 Dedicate set apart
 Rank sign of Rank
 consider great or important
 Kapu Capulate plant
 KA HIKO Direct line of ancestry
 a form of TUA HU