

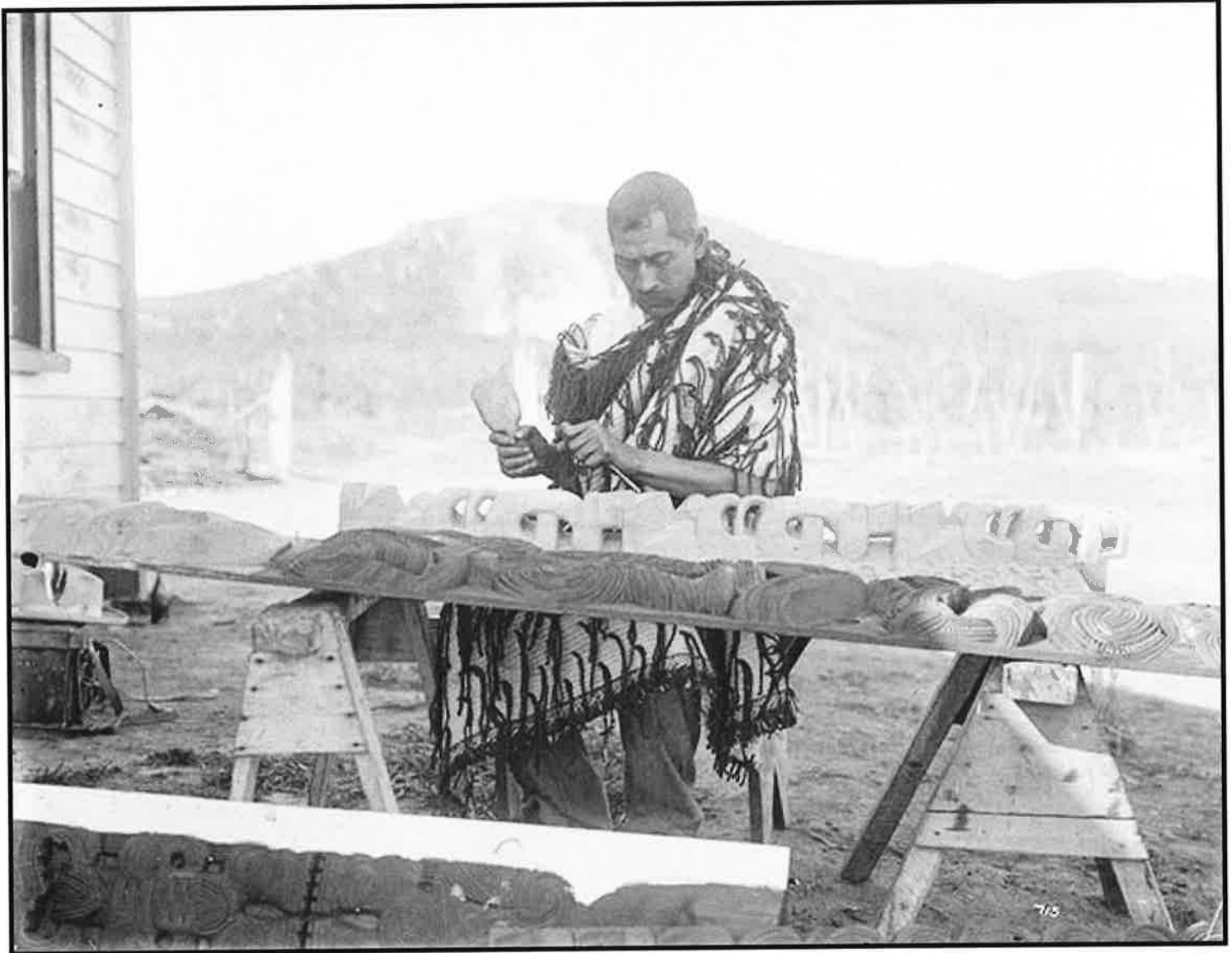
RAKKHA

[TREE]

**MAORI RAKA-U = TREE
KAHU = GROW SPROUT**

**FILIP FALETOLU JŌZWICKI
KAWATIRI
O MAUI TE WAKA
AOTEAROA**

TENE WAITERE



Courtesy:
The Encyclopedia of New Zealand

Tene Waitere, 1905

1	UT -THA-PETI UT-THE-HI UT-TARI	TO MAKE RISE camp of TARA BYOND FURTHER [ADDITIONAL]
2	UT-TARI UT-TARI YA UT-THA TI UT-THA-PE-TI	" " " " STATED BEING HIGHER TO ARISE BE PRODUCED TO MAKE RISE
3 and	UT-THA-HATI UT-THA-TI UT TARI STHA UT-TARA	TO RISE STAND UP ARISE ROUSE ONESELF BE ACTIVE out over byond additional STAY REMAIN STATION] orig OUT IN AN UPWARD] [ONESELF] [POSITION]
4	UT-THA-HATI UT	TO RISE Stand up arise ocent oneself, be produced. orig OUT IN UPWARD POSITION
5	UT TARI UT-THA-PETI	BYOND ADDITIONAL TO MAKE RISE
6	HIRA HI HITA	VEIN ARTERY TO SEND FORTH set in Set in MOTION] MOTION
7	HITA	PUT PLACED SET LAID
8	DHITA HRI HARATI HARISIYATI	TO take Bear Carry, Convey, fetch Bring
9	UT-THA-TAR	one who gets up Rouse's one showing energy, himself]
10	UT-THA-TAR UKH UC	one who gets up one who Rouse's himself One who shows Energy. TO GO MOVE
11	UT-THA-TAR	TO BE FOND OF one showing Energy Stand up arise become visible ACTION
12	UT-THA-PAN	A CAUSING TO LEAVE
13	UT PRU V-PLU	TO SPRING LEAP

PAU	LA	KĀ	RA	LIT "FITTING UP TAMIL = A SAIL
MĀRA	RA			SAIL
	RA	KA	HUI	ASSEMBLAGE
	RA	POI		ASSEMBLE hang together in a cluster
P 578 MĀRA	LA	GA	TI	TRANS FROM
		KAI	NEA	SCOPE of WORK
	RA	RE		FIELD of OPERATION
				CARRY
PAU	RA	-U-	WAARE	THATCH
		V	for VO	out of upwards, to see.
WAARA	RĀ	WAI		ADORN
	RĀ	WAARA		SAIL for CANOE
	RA	WEKE		prepare manipulate dress fashion.
PAU 570 VEO	RĀ	SI		HEAP MASS QUANTITY
	RĀ	SI		
MĀRA	RĀ	SI -	RANARA	HEAP of CINDER'S
HI -			NEARA - HU	CINDER'S
	RA			ABUNDANT NUMEROUS
	RĀ	HI		PLENTY FULL ABUNDANT
				SIZE MULTITUDE Numerous
PA	RA			DUST Covered - PIMPLES
PA	RA	AWA		GALE TEMPEST
PA	RA	KAINAKI		EXCREMENT
PA	RA	NEE KI		RUBBISH BROUGHT DOWN by FLOODS
	RĀ	POI		SWARM CLUSTER
	RA	PO POTO		Be assembled.
	RA	RA		SHOAL of FISH > RANEA
	RA	TO		BE DISTRIBUTED
	A	HI		FIRE
		HI	ATO	BE CATHERED TOGETHER
			ANEA	Aspect skeleton
		HI	KA	Capulate Plant

14 LAKĀRA

LIT 'FITTING UP,
TAMIL = A SAIL

byform
RUKKHA
RAKKHA
U - for VO

TREE
perf.

15 LANGHĀ - PANA making Jump Raising
LANG light quick little

RO PETI
RUKKHA
RAKKHA

TO MAKE GROW
TREE
TREE

16 LAKĀRA

'FITTING UP,
TAMIL A SAIL

= MAORI
HI RA
RA HI
HI - RA

ABUNDANT
ABUNDANT
ABUNDANT

Prefix	UT	TA	PE TI	Carve fashion paint tattoo NET ITO
maeres	UT	TA	PE TI	I TO MAKE RISE only in PHRASE
cause of	UT	TA	HATI	ARUNAN [SURIYAN] U. TO
2nd sing	UT	THE	- HI	LET THE SUN RISE TO WAIT FOR SUNRISE or GO ON TO SUNRISE
		[TA	RA*]	MEM, VIRILE [TO WAIT TO PRAISE]
PAU	UT	TA	RI	COMPANION of UTTARA OUT OVER
and	UT	TA	RIG	BYOND ADDITIONAL FURTHER
	VO			orig out in UPWARD DIRECTION [BESIDE'S]
131	UT	TAR	IYA	abstr from UTTARA+YA I STATE of BEING HIGHER II AN ANSWER
maeres	UT	-A		LAND OPPOSED TO the SEA INLAND opposed to the coast
	UT	-U		REPLY [MAN A CANOE/LOAD A CANOE]
		TEH-E		MEMBRUM VIRILE
[WHAKA	UT-	(E)	TEND	CARE FOR] ANEA aspect face in a certain direction HURI HURI TURN over IN ONE'S MIND
		[R	-O	MEM VIRILE] U-RANEA GLOW of SUNRISE
		TA	RI	WAIT EXPECT BE WAITED for
		TAH	-AKI	the SHORE REGARDED from the WATER
		TAH	-U-	A HEAP of FOOD at a FEAST
		TAH	-U-	NA LAND IN CULTIVATION BATTLEFIELD
		PE	TI	HEAP UP [TEHEM VIRILE]
MAH-	UT-	A		RISE JUMP FROM A BOAT OBSOLETE TERM
	U	-E-	NUKU	=RAINBOW [FOR TATTOOING [WHANGAREI]
WHĀ	U	-NU		GIVE DRINKT [of TENDING a TAPU person]
	U	-RE		M. VIRILE COURAGE
	U	-PO	KO	HEAD UPPER PART
	UT	-A		LAND opposed to the SEA INLAND
	UT	-U		DIP UP WATER [opposed to the COAST]
		TEH	-E	M. VIRILE [TIU HOVER SOAR
		PETI		HEAP UP [MILKY WAY N. WIND]
		PEKA		BRANCH of a TREE [RA-U-KA HEAP]
KAH	-U			KITE FOR FLYING HAWK YOUNG SHOOT GROW
		RIO		M. VIRILE RINER HAND ARM WEAPON
* RA-	U-	RAH	A	EXPANDED SPREAD OUT [of KOWHAI BLOOMING]
KAH	-U-	PAPA		STAGING ON A TREE BRIDGE OVER
RA	-UT-	ARA		3RD LEAF of a SEEDLING GROUND [RA-U-ANA CANE SIDES]
PAU	UT-	ARI		COMP UTTARA ADDITIONAL FURTHER BYOND
		RINCI		THROW IN GREAT NUMBERS

Notes		TA	RA	as COMPARATIVE	2
Pāli compared and		UT	TA	RI	BEYOND ADDITIONAL OUT
		UT	TA	RA	FURTHER OUT OVER
		UT	TA	RIṅ	
		UD			orig OUT IN AN UPWARD [POSITION]
131 abstract from MĀORI MĀORI		UT	TA	RI	YA I STATE of BEING HIGHER
		UT	TA	RA	II AN ANSWER
	RA	-U			EXTEND PROJECT LEAF FEATHER
		UT	-A		LAND opposed to SEA
		UT	-U		REPLY [INLAND opposed to Coast]
			TA	RI	WAIT EXPECT [here of an ANSWER]
Pāli 129 MĀORI	MAH	UT	-A		RISE JUMP from a BOAT obsolete term for TATTOOING
		UT	A		LOAD of MĀORI CANOE [WHĀNĀREI]
		UT	THA	TI	TO ARISE BE PRODUCED
		UT	THA	PETI	TO MAKE RISE
				PETI	HEAP UP
	WHĀ	KA		PETI	COLLECT EATHER
			TA	EPĀ	FENCE
			TA	RA	PEAK POINT SUMMIT
					M. VIRILE COURAGE RAY of SUN before SUNRISE GOSSIP
		RA	-U-	RA-U	RĀ SAIL them yonder. FOLIAGE <u>THATCH</u>
RA			RI	O	M. VIRILE
		HI	TA	WE	TALL
			TA	RI	CARRY BRING
		U-	RA	H-A	EXPANDED SPREAD OUT also said of KOWHAI BURSTING INTO BLOOM
RA	-	UT	(+)A	RA	3RD LEAF of a SEEDLING GOURD after first leaves of seedlings Land opposed to sea inland
RA	-	UT	-A		HEAP [opposed to Coast]
RA	-	U	-IKA		
RA	-	U	-A	WA	RAISED CANOE SIDE'S
			TA	RA	PEAK PAPILAE of SKIN throw out HORNS (of WANING MOON) SECOND PAIR of LEAVES
			TA	RAM	-U-TU DORSAL FIN of a FISH
Pāli MĀORI		UT	THA	PETI	TO MAKE RISE
			TAR	PE-KE	LEAP JUMP

PAU 121 and	UT UT	THA THA	HATI TI	TO RISE STAND UP GET UP 3 TO ARISE TO ROUSE ONESELF TO BE PRODUCED EXCERPT ONESELF TO BE ACTIVE
2nd sing cause 129	UD+STHA UT UT UT	THE-HI THA-PE-TI THA-HA-NA		TO MAKE RISE EXCERPTING ONESELF ROUSING ONESELF
ppd	UT UT	THA-HATI THA TARI		ONE WHO GETS UP or ROUSES HIMSELF ONE SHOWING ENERGY
> from	UT+STHA UT UT	THA THA	NA NT	[FOR: TARIKA TOSS ONESELF ABOUT] IRISING RISE GETTING UP STANDING II RISE ORIGIN OCCASION or OPPORTUNITY FOR as ady. ~° PRODUCE ACTIVITY INDUSTRY III ROUSING EXCERPTION ENERGY MANLY VIEOUT
PAU and 2 Comp of SK	UT UT UT	TARI TARI TARA		OUT OVER BEYOND ADDITIONAL FURTHER BESIDE'S ORIG OUT IN AN UPWARD POSITION STATION ONESELF TO TAKE UP A POSITION
MFOR		TA-I-NEA TA-U TAH-U-A TAH-U-NA TA-U TA-U-A TA-U TARA TA-KA TA-U-NEA TA-U-TO KO		STAY REMAIN PLACE TO BAIL A CANOE COME TO ANCHOR alight come to = MARAE [Rest] CULTIVATED LAND BATTLEFIELD part of RECIPROCAL ACTION BEGIN TO WEAVE PEAK HILLTOP PREPARE HEAP BE AT HOME IN A PLACE PROP UP SUPPORT
WHAKA	TA TA	-U RA		addresses in formal speech M. VIRILE PEAK of MT HORN of M. VIRILE [MOON COURAGE] be excited of feelings RAY of SUN BEFORE SUNRISE
PAU MFOR	UT TA TA	THA R-PE RI	TI KE NA NA HA NA	DAWN TO MAKE RISE LEAP JUMP WAIT Expect Rest Remain Shine glow give forth HEAT [Energy]

PAU 129 AND	UT	THA	HATI	TO RISE STAND UP GET UP
	UT	THĀ	TI	TO ARISE TO BE PRODUCED TO ROUSE or EXERT ON SELF
MAORI	UT - U			DIP UP WATER
	UT - A			INLAND opposed to the COAST
	Ū			TEAT BREAST
		TĀH - E -	RE	HANG UP SUSPEND
		TĀH - O -		SWIM
		TAH - U -	KURA	DREAM of ONE OEDU
		TĀH - E -	KE	DESCEND
		TĀH - Ū		RIDE POLE of a HOUSE
		TĀH - O -	RA	GATHER FRUIT of a TREE
		TAH - U -	A	HEAP espec food at a feast
		TĀH - U -	A HUA	SANDHILLS
		TAH - U		MAKE GRIMACES AT A DANCE
		TĀH - Ū		a ROD used for Supporting BIRD SNARES
		TAH - U	ERE	WEEDS
		TAH - U -	A	= MARAE
	TAH - U -	TI	RUN AWAY HASTEN	
	TAI		WAVE TIDE RACE	
		TI U	SOAR HOVER	
		TI - RA	MAST of a CANOE	
		HA EATA	DAWN	
		HĀTERA	WHITENED as WITH a SALINE EFFLORESCENCE	
		HĀT - E - TE	FIRE	
		HĀT - ATA	BLUSTERING	

as SK SK	UT	TAH - UT - I	RUN AWAY HASTEN
		" THA	orig OUT IN AN UPWARD TO RISE STAND UP [POSITION]
			TO ROUSE EXERT ON SELF

SK 63 MAORI	ABHI -	JDHĀU	TO RUN UP TO TOWARDS
	AWHI		DRAW NEAR TO BESIEGE
		TA U	ATTACK
		TAH - U NA	BATTLE FIELD

Note SK 191 and	U'D	-YATA	ELEVATED HIGH INTENTION
	UD	-YAM	RAISE SET UP I TO

				5 OUTOVER BYOND ADDITIONAL
Pau	OT -	TA RI		BYOND ADDITIONAL OUT
PALI	UT	TA RI		FURTHER OUTOVER State of being
camp	UT	TA RA		[higher]
AND	UT	TA RI		orig out in UPWARD POSITION
	VD			TALL TA EPA FENCE
MAORA	HI	TA WE		PK of a MT M VIRILE
		TA RA		RAY of SUN BEFORE SUNRISE
		TA R-E-WA		DECLINE of SUN
MAHU	UT	A		RISE [TARINCA EAR]
TARAM	UT	-U		Dorsal fin of a fish
		TA RI		Carry bring
		RINGA		Hand arm weapon.
		RA WHARA		SAIL of a CANOE
		TI RA		MAST of a CANOE RAY'S
				FILE of MEN ROW. BEAM'S
		TA RI		MODE of plaiting MANY STRANDS
		RA KA		where Jorder
	UT	A		LAND opposed to Sea
				in land opposed to coast
		RA E		HEADLAND POINT of land
		TA E		Reach arrive at. [forehead]
		RIO		M. VIRILE
		RINE-I		throw in great numbers shower
		RIO		flying ogre. [Pour out
		RI PA		Horizon Boundary Ridge]
	UT	U		DIP UP WATER [TOP]
Pau	UT	THA PETI		TO MAKE RISE [SK1297 HI TO SEND FORTH]
cause of	UT	THA HATI		[SK1298 HIKK = HICCUP]
Zng sig	UT	THE - HI		[MAORA HIANEA ACT of RAISING]
MAORA	UT	U		DIP UP WATER [SK1298 HITA PUT PLACE]
	U	RE		M VIRILE [HIHI FRONT GABLE of a HOUSE]
		TEH - E		M VIRILE
		TA RA		M VIRILE
		PETI		HEAP [HIKI LIFT UP]
		HI		TENENENI LIFTED UP RAISED
		HI TA WE		TALL [HIHI RAY of SUN]
		HI RE RE		TORRENT WATER FALL
		HINEA RUNEARU		ROUGH LUMPY of SEA
		HINENARO DERIRE		[UNEVEN WEAVING]
		HI KO		STIR as BIRDS AT DAYLIGHT

SK 1299	HI RĀ	VEIN ARTERY
cf	HI TĀ	
AND	SI RĀ	
>	HI RŌ	DAKA BLOOD
>	HI RĀ	NA SEMEN
MAŌRI	HI TĀ	MOVE CONVULSIVELY/SPASMODICALLY
MAŌRI	HI R-E-RE	GUSH SPURT RUSH WATERFALL TORRENT BE KILLED
SK	HI NEA	KILL
cf	HI NS	as MAŌRI HAN-I ITO
	HI N	injuring
	HI NSA	
SK 1297	HI	TO SEND FORTH SET IN MOTION
cf ✓	HAY	IMPELL URGE ON HASTEN INCITE
	HI NOTI	INCITE TO TO STIMULATE ASSISTE
Don	HE TA	HELP TO CONVER PROCURE
in	-H YE	
>	HI TĀ	sent impelled SET IN MOTION GOING RUNNING SPEEDING IMPELLED
MAŌRI	HE NE	ANUS
A	HI	FIRE BEGET
A	HI KI	MAKE HASTE
	HE -Ā	what place?
	HE -KE	MIERATE
	HEI PŪ	Going straight Towards
	HEI	Go Towards TURN TOWARDS
	HEI HEI	STORM
	HEI TA RA	Accusation Scandal.
	HE MA HEMA	Make amorous advances
WHAKA	HE KE	PUT IN MOTION (a body of MEN)
	HA E MANEA	Streamlet
	HA E A TA	DAWN
	HA I	principal stone in GAME of RURI
	HE RU	begin to flow [of TIDE]
	HI A	DESIRE
	HI	DAWN
	HI RI	LABORIOUS BRISK
	HI KIA	COPULATE
	HI N-E NEA RO	Seat of Emotions/Thoughts DESIRE

SK 1298
ppd / I
cf

H I TA
D H A
D H ITA

PUT PLACED SET, LAID
LAID UPON IMPOSED
LYING IN
SITUATED IN
CONTAINED IN
SET UP ESTABLISHED
PLANNED ARRANGED
PREPARARED MADE READY
ASSIGNED TO Given as a Name,
SUITABLE (often of DIET)
FRIENDLY AFFECTIONATE
NAME of particular VEINS or ARTERIES

Note 1299
MÄŌŪŪ

H I RĀ
H I RŌ OAKA
R O TO
T A NŌ
K U RĀ
T A K A
TĀ TAI

VEIN ARTERY
BLOOD
INSIDE of
take up in the HAND
RED [take HOLD of]
prepare
Measure arrange set in order

10

H I R I
TĀ HUA
H I K A
H I A
TĀ TEA
T A E
TĀ HE
H I R E R E
R O P I

prepare
study the Heavens in Navigation
LABORIOUS EXERTION
= MARŌE
Capulate
Beget
Desire
Semen
JUICE of PLANTS
'SHIT'
MENSES Abortion
Gush spurt
person.

Note SK
SPALI
for

R U - A - KI
✓ CI
R U J
R O EA

VOMIT see ROEA = J R U J
See MÄŌŪŪ RŌŌEA medicine

MIRI

HIR- A

ABUNDANT

SK1302

I HRI

TO TAKE BEAR CARRY IN

HAR ATI

OR ON. CARRY CONVEY

BR 170

HARI SHY

ATI FETCH BRING OFFER PRESENT

HARI TUM

TAKE AWAY CARRY off

TO CUT OFF SEVERE REMOVE

DESTROY TURN AWAY the FACE

appropriate MARRY [a girl]

RAISE a tribute ENRAPTURE

Conquer win Bribe

TO ENRAPTURE CHARM FASCINATE

TO DIVIDE be deprived of.

taken away Seized charmed

HRI TA

TAKING AWAY ROBBERY fascinated

HRI TI

BE ANGRY [HIHIRI RISE up THOUGHTS

II HRI

HOLD UP WEAPONS

MIRI WHAKA

HA - NA

SK1289

III HARA JHRI

BEARING CARRYING AWAY

HARA

Ravishing charming [Stealing]

SK1289

HAR TRI

ONE WHO CONVEYS a BRINGS a BEARER

"

HARA

bearing carrying away stealing [THIEF]

Ravishing charming relating to HARA or SIVA

"

HARA NA

WAR BATTLE CARRIED DIVISION

"

HARY A

from Gans CAUSING TO TAKE or SEIZE

"

HARI

TO Be Carried [-RIRI = BATTLE]

Captivating charming BEAUTIFUL

MIRI

NEA

RE SEND URGE PRANA CHARGE

NEA

HU HUNT WITH DOGS

TIR -I

OFFERING TO A GOD SHARE PORTION

TIR -A

COMPANY of TRAVELLERS

WA

HA

SHEET of a SAIL

HAR TE PE

CUT off HAEMATA CUT UP

HARI

CARRY [HARA EXCESS] [RAW]

HARIR - RA - U

WINE [HANAHANA PUD MUL]

HAR - O

VAULT of HEAVEN [CONVEYER]

HA - U

Breath WIND AIR SEEK

HAR - HAU

SEEK [HAKOKO MUTTON BIRD]

HAR - E =

HAERE Come go TRAVELLERS BECOME

HAKA RI

Gift present feast entertainment

HARI

DANCE SING JOY [HAKURE Remove LICE]

HARA

PROCURE [HAKOHAKO = HEAPED UP]

HAR

Taste flavour odour BREATH

PŌHĪ

UT - THĀ - TAR

ONE WHO GETS UP OR ROUSES HIMSELF

ONE SHOWING ENERGY

MAŌRI

TAH - U - NA

CULTIVATED LAND

BATTLEFIELD

TAR - EKA ACCOMPLISHED STRENUOUS

TAR - I CARRY BRINE

TAR - I INCITE UREE

TAR - E BE INTENT UPON

TAR - A COURAGE

TĀH - O - RA GATHER FRUIT of a TREE

TAH - U - A HEAP espec of FOOD at a FEAST

TAH - U - TI RUN AWAY

UT - O

REVENGE TĀR - Ū PAINFUL

UT - U

DIP UP WATER TO FILL

UT - A

put person or goods on board PROPERTY [a canoe]

UT - A UTA

TĀ TAI

Measure arrange set in order

prepare Study the Heavens in

TĀRIKA TOSS ONESELF ABOUT [Navigation]

PU

TA

BATTLEFIELD

PŪ

TA HUI

a SCREEN IN A PLANTATION

TA - U

ATTACK [TĀRŪ SHAKE]

TAR

EKA ACCOMPLISHED SOLITARY

PŌHĪ

EKA ONE SINGLE SOLITARY

WITH or WITHOUT CONTRAST TO 2

TAR - I

INCITE [TĀRUKE REVENGE SLAUGHTER]

MAŌRI

TAR - A - PEKE SPRING LEAP JUMP

TĀR - A - HU HEAT AN OVEN

TAR - A - HAU STRETCH OUT PASS FORWARDS

TĀR - AI DRESS SHAPE TIMBER

WITH AN ADZE

- AI - Come together See.

SIX

MAŌRI

TĀ TARA

FENCE [TĀRUPE WAVE]

TA - E - PA

FENCE [ABOUT SHAKE ABOUT]

WHAKA

TAR E BE EAGER INTENT

TĀR - EKA Eager intent = TĀKARE

TAR - E SEND [PĀTAR / PROVOKE INCITE]

TAR EKA Be accomplished

TAR - I CARRY BRINE

PALU UT-THA-TAR

ONE WHO GETS UP
ONE WHO ROUSES HIMSELF
ONE SHOWING ENERGY

PALU 132 UD-

orig^g OUT IN AN UPWARD DIRECTION, OUT OF FORTH
One half of all words beginning with °U are combinations WITH UD which in composition appears modified according to the RULE'S of assimilation as in PALI

UT TA R-A

I OUT OUT of, AWAY FROM/HIGH UP UPWARD
HIGHER [ON TO

U MMU JJATI
U JJA LIATI
U DE TI

O SUBSTITUTED for U or REDUCED U
TO RISE UP OUT of (WATER)
TO BLAZE UP HIGH
TO COME OUT of and TO GO UP

Note

UD FA as SK UT A
TE HE

A and U disjunctive particle
M. VIRILE

UT -A
UT -U

Coast opposed to Sea inland opposed
DIP UP WATER [to coast]

U TA RA

PEAK POINT SUMMIT COURAGE

U RA NEA
U RE

Reach land arrive by water
Glow of Sunrise
M. VIRILE

TA RA
MU A

M VIRILE
of place FRONT FORE PART IN

TI-U
TIKOTIKO DIARIBOETA

SOAR HOVER [ADVANCE of IN FRONT]

UT -O

REVENGE [TI-U MILKY WAY]

TAR- IKA
TAR- U-KE
TAR-

TOSS oneself about
U-KE AVENGE SLAUGHTER of BATTLE
AI Dress shape fashion timber with

SK172 P
MFAOTI

UK H
OK IFA TI | OKHITUM
UK -UI
OK -E

TO GO MOVE [an Adage]
SCOUR RUB WIPE
PUT FORTH ONE'S STRENGTH

SK172
PFA 2sing
MFAOTI
U

UC
UC ISHE
UK -AI -PO
UK -A

TO BE FOND of, TO BE ACCUSTOMED
MOTHER SK -AI - meet Together see
CLING TIGHTLY U TEAT BREAST

PAU 129
SK 179

UT THĀ-TAR
UT-THĀ
UD-STHA

ONE SHOWING ENERGY ROUSE ^{oneself}
TO STAND UP SPRING UP
RISE RAISE ONESELF
SET OUT FINISH LEAVE of.
TO RISE [FROM THE DEAD]
TO RISE FROM ANY OCCUPATION
TO COME FORTH ARISE RESULT
APPEAR BECOME VISIBLE
TO SPRING ORIGINATE FROM
TO RISE [FOR THE PERFORMANCE of any
ACTION] TO BE BRAVE TO MAKE EFFORTS
TO BE ACTIVE or BRAVE EXCELL
TO Cause to stand up to rise start
Set up lift up erect PUSH OUT
TO GET OUT DRIVE OUT SEND OUT
TO PRODUCE MAKE ALIVE ANIMATE

SK 179
PAU
and
MAORI

UT-TĪ R NA
UT TI RĀ TI
UT TA RĀ TI
U
TA-U
TI RA
TA-U-MATA
TI RA
RĀ
TI RĀ KI
TI RA-U
RUA TI RA WA
TAH-U-NA
TAH-U-A
TĀR U
UT U
UT O
TAH-U-KURA
TĀR-U-KE
TAH-UT-I
TA-E
PA TA KA
TA-E-KE

LANDED CROSSED TRAVERSED [TO EXCITE]
TO COME OUT of DISEMBARK
TO COME DOWN PUT UP AT
Reach land arrive by water
COME TO ANCHOR
COMPANY of TRAVELLERS
RESTING PLACE [on a HILL]
RABS BEAMS FIND FISH
MAST of a CANOE
there yonder SAIL
CLEAR AWAY of CLOUDS
PICK ROOT CROPS
STORE PIT
BATTLEFIELD CULTIVATED LAND
= MARAE
PAINFUL ACUTE
dip up water
AVENUE
DREAM of ONE DEAD
SLOUGHTER in BATTLE AVENUE
RUN AWAY
BE ACCOMPLISHED TOUCH of
FEELINGS COME GO REACH ARRIVE
FOOD STORE
SET SNARE'S

SK180 UT-THĀ-PA NA CAUSING TO LEAVE
causing to Rise or get up.
Bringing forth Causing to Come.

MAERO UT - O REVENGE
U REACH LAND arrive by WATER
TA - E Come go Reach arrive
TA - E - KAI WORN OUT SOIL
TA - E - RO OBSTRUCTION HINDERANCE
TA - E - TANEA SACK CAPTURE

WHA KA TA - E CAUSE TO COME ABOUT
TĀ I NEA place to Bail a canoe.
TAH - E MENSES see.

SK MAERO TAH - U - MAERO SICKNESS DISEASE
RO - GA BREAKING UP OF HEALTH
RO - NEOA MEDICINE

TAH - U - TI RUN AWAY

TA I TAIĀ UNLUCKY in FISHING
TA I A ROA Weary Exhausted

WHA KA - TA I RORI TURN AWAY MOVE off
TA KATAKA SET anyone on his WAY

TA KIRI FALSE RETREAT to lead
an Enemy into an AMBUSH
PAN UI PROCLAIM ANNOUNCE
PA NA DRIVE AWAY EXPELL
PĀ Assault
PA - E - NEA BOUNDARY
PA - E - TA - U SIT APART
PA HE NO ESCAPE slip away
PĀ KE HĀ COLONIAL
PA KE WA SOLITARY wandering
TA HĀKURA spirit of one dead visiting a U
A PA spirit of one dead visiting medium
NAKANAKA MOVE TO OR FROM
NA KA MOVE IN A CERTAIN DIRECTION

SK181	UT		orig out in upward direction
connected with zng sing for	UT-PRU		TO SPRING LEAP
	✓ PLU		
	- PRO	SHITHAS	
MAORI SK715 POP	UT-PRU	SH	THAT WHICH BUBBLES UP
	✓ PLU	POR-G-NA	FLOAT [A BUBBLE]
	A PLO	SHTA	FLOAT SWIM BATHE TO GO or CROSS IN A BOAT SAIL NAVIGATE HOVER SOAR FLY
SK PAGE 715		POR-ANEA	FLOAT [sway to i fro BLOW as WIND leap jumps Spring from or to for UPON
		PLA VAKA PLA VA	BOA - swimming floating raft boat see FLOOD SCOPE going by leap's
MAORI	UT	- U	DIP UP WATER for plunges
	UT	PAR - I	FLOWOVER of the TIDE FLOWING of TIDE inland opposite to COAST
	POR - E - A	CANOE	
	PUR - E - RO	PROJECT BE PROMINENT EMERGE FROM WATER	
	PUR - E - HU	CLOUD MIST (as leaping)	
	PUR - E - HUA	Flickering	
	PU	NETA	ANCHOR
	PUR - E - WA	FLOAT	
	PUR - O - RO	DRIVING RAIN HEAVY	
#		PUR - AHO	LASHINGS - CANOE [DRIVING RAIN]
		PUR - U - HI	FLEA!
WAIU	PU	PUR - U	PULPY SEMI SOLID
	PU	PUR - U	CURDLED MILK
		PUR - U	MOULDY
		PUR - U - PURU	Caulking of a CANOE (BUBBLING LEAKS)
		PUR - E - NA	STAY of a MAST
		WA KA	CANOE
		PUR - E KE - REKE	IN PUFFS of WIND
#		PU NA	a Spring of water
		POR - E - TERETE	a species of DUCK!
		POR - <u>UT</u> - U	make a splashing with the hands in Bathing BREAK as SEA or SHORE [ie LEAPING]

PAU	LA			SYLLABLE of ABBREVIATION = 1 TO / ECT
	LA	KĀ	RA	LIT 'FITTING UP TAMIL = A']
for	ALA	NKĀ	RA	MĀORI KĀHUI [assemblage] [SAIL
P 578 >	LA	EA	TI	ROOT LAG (= SANGA) TO ADHERE
See MĀORI	RA	NG-	1-SKY	STICK TO TO HANG FROM, see
MĀORI	RA	+U	for UD-	LEAF [LANE'ATI LIGHT QUICK
	RĀ	KAI		TREE
PAU 580	LA	TA		a creeping plant slender]
MĀORI	RA	POI		HANG TOGETHER IN A CLUSTER
	RĀ	PUPUKU		put forth BUDS
	RA	PA		STICK ADHERE TO
* PAU 571	RU	KKHA		PRK form RUKKHA TREE
BYFORM	RA	KKHA		MĀORI TE KĀHU o TE RANGI BLUE SKY
MĀORI		KĀH - U		SURFACE KA = WAKA CAUSATIVE
SK	RU	KA		SHINING = TREE IN REVEDA [PROF.]
	RU	KKHA - MU		LA ROOT of a TREE [MU - see]
		-AN		TARA INSIDE of a TREE [TĀRA I TO]
MĀORI	RA	+U	(UD-)	LEAF U = UD - OUT FROM
PAU	RU	PE	TI	TO make grow [MĀORI PĒNĀ and TINĀKU]
"	RU	HA	NA	from RUA GROWTH ROPETI make grow
MĀORI	RA	KAI		ADORN BEDECK [PĒNĀ do in this way
"		KĀH - U		GERMINATE GROWS PROUT
PAU	-U	for	UD	OUT of FORTH UPWARDS
WHAKA	U			BRING TO LAND
	U -	HO		UMBILICAL CORD
	U -	KI		DISTANT TIMES PAST or FUTURE
	U -	NA	HI	SCALE of FISH
	U -	RE		M. VIRILE
	U -	RE	TAREWA	MALE LINE of DESCENT
	U -	RI		OFFSPRING
	U -	RU		HAIR of the HEAD (plural)
	U -	RU		APPEAR ABOVE the HORIZON.
	U -	TU		SPUR of a HILL
	U -	WHI	U WHI	SPRINKLE SHOWER
	U -	A		RAIN
	U -	TO		REVENGE
	U -	TA	UTA	PROPERTY
	U -	TA		LAND opposed to Sea in land
	U -	RUTIRA		Dorsal FIN of FISH [opposed to Coast
	U -	RU PA		CATCH A CRAB [CATCH IN the WATER]
	U -	RU TĀ		EPIDEMIC Spread as a Disease

PAU 579 from CAUSE	LA NGHĀ PĀ NA LA NGH LA NGHĀ TI	MAKING JUMP RAISING LIFTING (LAUNCHING) TO JUMP OVER LIT TO MAKE JUMP
CAUSE a byform of	LA NGHĒ TI LA NGH LA GH	LIGHT QUICK or LITTLE [from the movement of jumping] TO JUMP over
MĀORI	RĀ NĒA	RUSH CHARGE SET IN MOTION SHOAL of FISH
See	RĀ NĒ - I PĀ NA	Shy heaven weather GODS ITO Drive away expell. NĀ-KĀ MOVE IN A CERTAIN DIRECTION
	RĀ RĀ (KĀ) WHĀ KĀ -	NAKANAKA Move to or FROM NAK'SĀTRA LUNAR MANSION'S SAIL There Yonder There Yonder NAMUNAMU APPEAR LIKE A SPECK IN THE DISTANCE NĀNĀMU flash glitter
	RĀ RO HĀU RĀ RĀ	LIGHT BREEZE RIPPLING WATER Be scattered STAMPEDE Rush in DISORDER
	RĀ PĀ HUKI RĀ NĒA TĀ HI RĀ NĒA RĀ NĒA	Trip up Move quickly lift up (move)
PAU MĀORI	RO PĒ TI TĀ RO PĒ NĀ PĒ I	TO MAKE GROW COLOCASIA ANTIQUORUM DO IN THAT WAY SO CLOD of EARTH TI NĀ KU BED IN A GARDEN
P 571 BYFORM MĀORI	RUK KĀA RĀ KĀA RĀ KĀ I KĀA - U RĀ - U U	TREE TREE TREE GERMINATE GROW SPROUT LEAF
PAU		for UD - OUT FORTH in UPWARD POSITION ITO

PAH 129 and	UT UT	THA THA	HATI TI	TO RISE STAND UP GET UP TO ARISE TO BE PRODUCED TO ROUSE & EXERT ONESELF TO BE ACTIVE
END SING FOR	UD+ UT UT	STHA THE-HI THA-HI		[MAORI TE-I-TE-I HIGH TALL] [" HI-TA-WE TALL-LONG]
CAUSE 129	UT UT	THA-PETI THA-HA		TO MAKE RISE [ARUNAN(SURIYAN) U = LET THE NA ; EXERTING ONESELF [SUN RISE
PPd	UT UT	THA HA* THA TAR	TI	ROUSING ONESELF. ONE WHO GETS UP or ROUSES ONE SHOWING ENERGY [HIMSELF]
Nag d >	UT+ UT	STHA THA NA		NT [MAORI NA WE EXCITED & FEELINGS] I RISING RISE GETTING UP STANDING II RISE ORIGEN OCCASION or opportunity for an adj - PRODUCING III ROUSING EXERTION ENERGY
from	UT+ UT	STHA STHA		ACTIVITY MAINLY VIGOUR INDUSTRY
> cause of	UT UT	THA PETI THA HATI		I TO MAKE RISE only in PHRASE ARUNAN(SURIYAN) U. TO LET THE SUN RISE is TO WAIT for SUNRISE or GO ON TO SUNRISE
PAH and	UT UT UD	TA RA* TA RI TA RI		[TA RA* MEM, VIRILE] [TO WAIT TO PRAISE]] comparison of UTTARA OUT OVER] BEYOND ADDITIONAL FURTHER] out in UPWARD DIRECTION [BESIDE'S]
131	UT	TARIYA		abstr from UTTARA + YA I STATE of BEING HIGHER II AN ANSWER
MAORI	UT UT	-A -U		LAND OPPOSED TO the SEA INLAND opposed to the coast REPLY [MAN A CANOE/LOAD A CANOE]
		TEH-E		MEMBRUM VIRILE
		RUNGA		TOP UPPER PART UP ABOVE ANGA aspect face in a certain direction HURI HURI TURN over IN ONE'S MIND
		[R I-O MEM VIRILE] U-RANGA		GLOW of SUNRISE
		TARI		WAIT EXPECT BE WAITED for
		TAH-AKI		the SHORE REGARDED from the WATER
		TAH-U-A		HEAP of FOOD at a FEAST
		TAH-U-NA		LAND IN CULTIVATION BATTLEFIELD
		PETI		HEAP UP