

PRETPOSLEDNJI

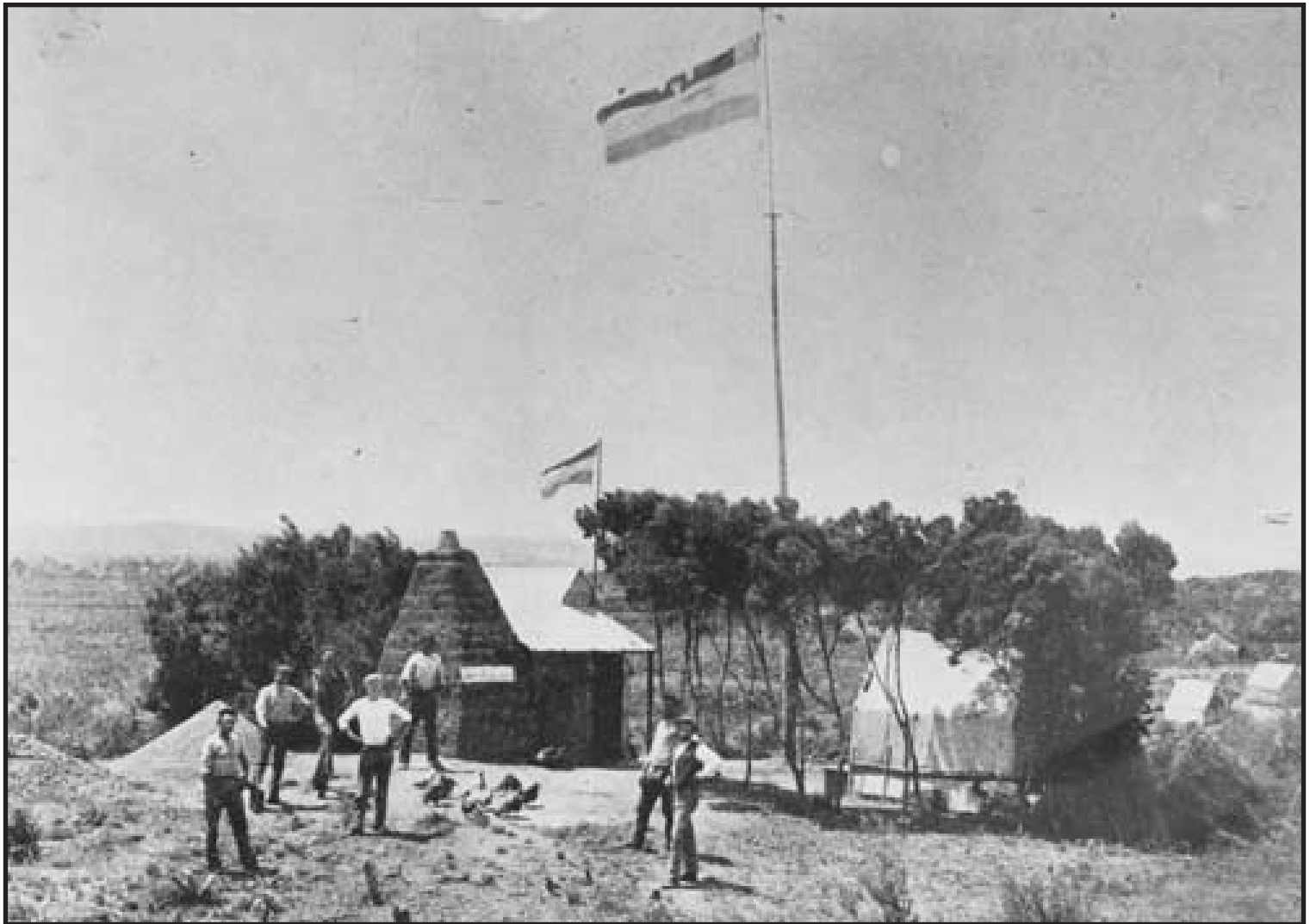
87 Amituama'i
Adele Schaeffer
J Kareta'i

F. FALETOLU - JOZWICKI

OMAU
KAWATIRI

[30 pages]

Dalmatian gum diggers' camp.



Alexander Turnbull Library

Gum diggers pose in front of their homes as a sea breeze flutters the Croatian flag. This camp, photographed in 1901, was at Waipapakauri near Ninety Mile Beach in Northland. In open areas such as this, sod and sack dwellings were common. The chimney and lower walls of the cottage shown here were built with sods cut and squared with a gum spade. In hilly, forested areas, the roofs were often high-pitched and thatched with nikau fronds.

SK	A	KARA	✓ KRI	A DOER
PALI		EKATO		ON the ONE SIDE
SK	B	WARA	✓ VRI	ENCLOSING ENVIRONING
	1	SUNYA-IA		VOID
	2	MA RU TA		WIND GALE
	3	RI KSHA		NIT NOTE in a SUN BEAM
		KHI LO		STAKE BOUNDARY
	4	RI		principle inner Law of things,
	5	UPA CI		TO HEAP UP COLLECT
		-CI NOTI		
	6	RAM		DELIGHT ENJOY
		RASI KO		ACCUMULATION
	7	RASI KO		Accumulation
		BAHULI-KAR		CULTIVATE
	8	UDAKAM		A MEDIUM of FLOATING
		EKATO / EKE		On the one side
	9	SUTRAJMAN		Breath Thread
		SETU		Line Bridge
	10	SAMAHITA		UNIFIED
	11	GI TAM		SINGING
		GAMO		VILLAGE
	12	GAH		Seize Grasp
		JHERO		Elder
	13	VARUNA		All Enveloping Sky
		- VARA ✓ VRI		Enclosing environing
	14	UPA ✓ S TU		TO INVOKE Celebrate in Song praise
	15	GARA VO		Respect
		GI MHIKA		SYMMETR
	16	GAHAPATI KO		house holder
	17	" " " " "		" "
	18	JANO		people person
		CAR		proceed Live
	19	JANATA		the PEOPLE
		JIVO		Soul life principle
	20	CHAMA		Earth Ground
		JIR		become OLD

21	SĀVĪTAR KAP PO BHI	RECITER AEON BEAFRAID
22	PAKSHA PAU PAKKA PDU PAKKA PE PEKKHITAR BALI	Side or half of any thing wing faction ITD RIPE and so on 170 LOOKER ON OBSERVER Religious base CONTRIBUTION and so on 170
23	PE PEKKHITAR BHU YA	LOOKER ON OBSERVER. BEING BECOMING
24	DVARA ARHAT	DOORWAY MOVER at WILL
25	DHARMA Reat DHR VAC	carry Bear Supporters! LOGOS

EKE!

PAU EKE MAORI EKE EKE! A

SK ✓	KA	RA
MAORI	K RI	
	KA	RA
TA	KA	
	KA	RA
PA	KA	
	KĀ	NEA
PA	KA	RI
PA	KA	
PA	KA	RU
PĀ	KA	TO

A DOETZ TO HAND A CAUSATIVE MARKER
 PRODUCED
 PLOT CONSPIRACY
 = WHAKA CAUSATIVE PREFIX
 PREPARE
 -NEA CALL SUMMON
 QUARREL
 HOME,
 MATURED RIPE
 COOK
 BREAK IN PIECES
 FLOW of the TIDE

PAU	E KA TO	
PAU	E KE	NOM PLURAL
MAORI	E KE	-E KE
PĀ	KE	- HĀ

ON the ONE SIDE opposed]
 to the other MAORI TOHI CURVED WANING MOON]
 ARRIVAL of GUESTS TIEKE FOUNDATION
 ENGLISHMAN [PAU KENA BY WHOM?]

PA	KA	UROHA
A	KA	
	TE-I-	RA-TANE!
A	KA	
HOE TA	KA U	
		RI NEA
		RI O
	A	RI KI
	A	RI HI
WHA -	KA	RI KI
	PA	RI
	PA	RI
	PA	RI TO
	PA	RI RI
		RI RI
	PA	RI RI
	O	RA NEA
		RA NEA
	O	RA
	RIE	
	TA	RA I
		RA
KIR-	I	

EXTENDED on EITHER SIDE
 [TAHU] = ANGA SET ABOUT DOING
 [ANYTHING]
 AND >>>
 Clean off scrape away
 STEERING PADDLE
 HAND ARM WEAPON
 M. VIRILE
 LEADER
 CHOP CUT
 INVADING ARMY
 BARK as a DOG ABUNDANCE
 FLOWING of the TIDE BE
 OFFSPRING [OVERPOWERED]
 SHOOT UP GROW
 COMBAT BATTLE
 a clearing in the BUSH
 a clearing in the BUSH
 LIVELYHOOD LIVING
 SET IN MOTION
 ALIVE LIVING
 2
 DRESS TIMBER WITH AN ADZE
 LIFE PRINCIPLE
 PERSON

MĀORI	RI	U		
SK 921		WA	RA	
from	WRI			
MĀORI			RA	HO
WIKI	AR	KI		
	ARI			
PI	-RI			
	PA	RA	RA	
		PA	RA	NGA
PI	-RI	NGA		
PI	-RI	AHI		
		PA	TA	KA
PI	-RI	POHO		
	RI		RA	NGO
	RI	MU		
		WHA	RA	
	WT	TĀ		
	WIR	-I		
	WIR	-I		
	WIR	-I		
	WI	TĀ		
Notes: See	[WI	WT =		
		WA	WA	
		WA	O	
		WĀ		
		UA		
		WĀ	WĀ	
		WA	HA	
		WA	HO	
		WA	IKAU	RI
		WA	HEO	HEU
		WA	I	PUKE
		WA	I	PU
		A	RA	
		PA	RA	A WA
			RA	I HE
WA	RI			
			RA	NEI

BILGE of a CANOE
ENCLOSING ENVIRONMENT
[MĀORI WA-WHA-PA-ITO]
LABIA MAJORA TESTICLE
INVADING ARMY
FENCE
THE WOVEN FLAX FOUNDATION
ROAR of SEA] of a DOGSKIN CLOAK WOVEN
SLEEPYNES] MAT WORN AS ARMOUR.
HIDING PLACE
ONE WHO KEEPS CLOSE TO THE
RAISED STOREHOUSE] FIRESIDE
NURSELING CHILD IN ARMS
SHUT OUT WITH A SCREEN
BLOW FLY'S - [PROTECT]
SEAWEED MOSS
BURIAL CAVE [SK BHARA Carry]
one of the FENCES of a PA [BEAR]
SHIVER
A LOCK IN WRESTLING
SHOAL of EELS
SOUTH WIND WITH RAIN
[RA I HE FENCE]
[RANGATAHI FISHING NET]
FOREST
DEFINITE SPACE AREA TIME
RAIN [VASA] [SEASON]
FENCE
SHEET of a SAIL P. MUL
the OUTSIDE
TATTOOING PIGMENT
Second growth in a clearing
FLOOD
VOLLEY of GUNS
PATA [as in a forest ITO]
WA GALE TEMPEST
FENCED STOCKADE
WATERY of FROSTED POTATOES
SKY WEATHER

MARORI
SK

SU NY A-TA

Appear seem to be
VOID, [conceived as the female principle from which forms arise i to which they Return

MARORI

HU
HU AK ORE

MVD SWAMP
TO NO PURPOSE
open uncover DAWN

HU AK I

having no descendants

HU AM UTU

ASTHMA

HU ANGO

LAZY

HU HURE

CHILDLESS

HU ATEA

DEFICIENT WANTING

HU KA

exhausted by frequent cultivation

HU I KI

COLD FROST SNOW FOAM

HU KA

DAWN

HU KA HUKA

DEVOID of DESIRE

HU KO RE

TA HUNA SAND BANK [TAHU NYA]

HU N - A

CONCEAL destroy devastate lay waste
Concealed.

HU N - A

MOON on 10th DAY

HU N - E

Begin to Dawn.

HU RA

DROWN

HU RI WA I

WINTER

HU TO KE

from shape Semblance opposed to Substance

SHADOW REFLECTION

REFLECTED IMAGE

A TA - PO BEFORE DAWN

A TA - ITI EARLY DAWN

A TA - TU JUST AFTER SUNRISE

TA - E KAI WORN OUT SOIL

TA - HANGA EMPTY

TA - HAKI one Side

and PAU PARITTA ITO

TAI AROA WEARY EXHAUSTED

TAI AWA VAGINA

TA KI RAHA OPEN SPACE

TA - HU - A - HU SANDHILLS

See esp

TA NGI

SK MAORI	MA	RU	TA		WIND GALE
		RU	RU		WIND STORM RAIN
			TA		WIND
SK MAORI	MA	RA	NG	AI	STORM N, WIND
	MA	RU	T		children of heaven or ocean.
	MA	RU			POWER AUTHORITY
	MA	MA	RU		SAIL
SK = MA	MA	RU			one of the principle Gods of the OCEAN
SK MAORI	MA	RU			WILDERNESS
	MA	RU	A		VOID
		RU	A		Abyss of heavenly Beelie's
	MA	KU			WET
SK MAORI	MA	RU			Abstinence from drinking
	MA	RO	KE		DRY
		RU	MA	KI	DROWN
	MA	RA			prepared by steeping in water here in Esoteric sense of prepared Souls, APA
SK	VA	RU	NA		all enveloping sky.
Pobk MAORI	MO	K	RI		WET
			RI	-O	M. VIRILE
	MO	A	TA		Early in the morning
	MO	A			Raised plot in a Garden
	MO	AHO			SHELLFISH STEEPED IN WATER
	MO	ANA			SEA LAKE Roof of a food store
	MO	EHEWA			INTENSE DESIRE
	MO	K-A	KATI		PUD MUL
	MO	KI			Raft
	MO	WA			WATER Become Moist
		PA	RI		FLOWING of the TIDE
			RI	MU	Seaweed mildew moss
			RI	PO	Deep pool.
			RI	U	BILGE of a CANOE
	KA	RI		HIKA	COPULATE

SK	RI	KS	HA	A NIT. A MOTE IN A SUNBEAM
=	LI	KS	HA	
MAORI	RI	-	HA	NIT
			HA-E-ATA	DAWN
			HA-E-ATANGA	BEAM of LIGHT SHINING THROUGH AN [OPENING]
			HA E	Appear shine Gleam
	RI	K-	O	Dazzled
	RI	RI	KO	TWILIGHT
	RI	K-	I	SMALL
MAORI		RA	H-	1-RI ROPE ie line of ancestry
PBU	O	RA	S	OWN
of	U	RA		BOSUM [eg CHILD]
MAORI	O	HA	NEA	NEST
	O			of belonging to house's land people
WHAKA	O	MO-	O-MO	TEND A CHILD or INVALID
	O	RA		Alive healthy Satiated
	O	RA	NGA	livelyhood Welfare Satisfaction
KIA	O	RA		GREETING
		RA	TA	Familiar friendly
		RA	HI RI	recieve cordially Wellcome.
		RA		WED
		RA-U-A		RAITOU/RAMA pron 3 pers plural.
		RA	NGI	Seat of the affections
MA		RA		FRIEND [of CHILDREN only?]
		RA	POI	first pregnancy.
		RA	TO	Serve Round DISTRIBUTE
		RA	UWIRI	Set in order a cultivation
PAU	KHI		LO	STAKE [BOUNDARY]
MAORI			RO	HE BOUNDARY ! ENCLOSE
TAKA	HI			TRAVERSE LAND BOUNDARY TO
		RO	U A	LONG STAKE [CLAIM OWNERSHIP]
		RO	AU	RAIL IN A FENCE
		RO	HI	SCREEN WITH BUSHES
KI	-RIT	ANGA		INNER FENCE of a PA
HI	WI			a Pole fixed in a tree for a bird snare.

830

See SK
☰

RI

See Notes on Chinese terms from SK 100 4
SNODARPS STUPA LI [PRAKRITI = SUBSTANCE
IS THE PRINCIPLE OR INNER
LAW of things. it is the principle
by which things are what they are
and not something else, or the
PATTERN of ORDER that
RUNS THROUGH THE UNIVERSE
It denotes the Plenitude of that which
SUSTAINS the PHENOMENAL WORLD

See
See

A

LIN CA
RI
RI

the INNER LAW of THINGS CONTAINING
MATRIX

MAFORA

A
I

RI - O
RI NGA
RI KI
RI

M. VIRILE
HAND arm WEAPON
Chief leader PRIEST
REST UPON BE SUSPENDED
FROM HAND BE ELEVATED
ELEVATE IMPUTE CAUSE TO ASCEND
YIELD BESTOW Release set free
going motion course stream current
limit boundary usage custom practice
NATURAL PROPERTY OR
[DISPOSITION]

WIHKA
SK 881 2
SK 881

I
RI
RI
RI TI

859

3 RI = RA

acquiring possessing giving effecting
fire heat love desire speed amorous play
brightness splendour [used in explaining
an etymology] going motion

MAFORA

RI TE

Resemble compare with like alike
corresponding in position number
balanced by an equivalent

WIHKA

RI TE

Make like put in order arrange
balanced by an equivalent fulfil perform

See SK 2

RI = 3

TA RA
RAI

M VIRILE PUD MUL
& ATI-RI / BRIHAD-RI

RAMU

PUD MUL

Māori SK197

U PA CI
- CI NO TI

TI-NO-HI PUT HEATED STONES ON FOOD
TO HEAP UP COLLECT
POUR OVER GATHER

U PA CA YA

HEAP ACCUMULATION
INCREASE PROSPERITY

U PA CI TA

HEAPED UP INCREASING
ACCUMULATION INCREASE

U PA CI TI

HEAP PILE AUGMENTATION

U PA CI TI-√ BHU

TO INCREASE GROW

U PA CE YA

TO BE COLLECTED or HEAPED
EARTH OVEN [UP]

U MU

SK194

U PA

prep/ptef to verbs or nouns
expressing TOWARDS NEAR TO
WITH TOGETHER NEARNESS NUMBER

Māori

U

PA

FLOCK HERD CLUMP

U PA NG

Abreast in even Rank

PA E

Collected together Ready for use.

PA - TA - KA

FOOD STORE

U - TA

Load or man a canoe

U - KA - UKA

Bear Support Sustain

be preserved last

WHA

- KA

to of place. FULL

FILL

KI

KI

Dig up

KE RI

PINEPINE Gather together Assemble

KE RE

at in on of place.

KE

KAI INGA

HOME

KAI

QUANTITY NUMBER

FOOD [PRODUCTS]

KAI HAU KAI FEAST

TA KA

HEAP of food at a feast

TA KA

heap of food at a feast

TI RI

Share portion

PŪ

HEAP STACK

HUA fruit flowers produce

NO IHO

Settle Dwell live [product]

U PA NE

TERRACE of a HILL mevon

U RU HUA

SWELLING [Rank]

PAL	RAM			DELIGHT ENJOY [POETIC]
	RAMA	NIYA	A	DELIGHTFUL
	RAM	MA		DELIGHTFUL [POETIC]
MAORI	RA			WEO
MA	RA			FRIEND
See	RAMA			torch light, too >>>!
	RATA			familiar friendly
	RAM	U		PUD MUL
	MA	KUE		very pleasant [of taste]
	MA	NA	AKI	Sho'd Respect kindness
	MA	NINI		pleasant
	MA	RIRI		LOVE
HAW-	MA	LIU		look on with kindness
MAORI	MA	NGA	RI	Luck fortune.
PAL	RA	SI	KO	ACCUMULATION
MAORI			KO-HA	SURPLUS [SIK HA = HAPPYNESS]
	RA	HE		small stockade fenced [HAKOAKOA]
	RA	TO		BE DISTRIBUTED
		HI	A	how many.
		HI	ATO	BE GATHERED TOGETHER
WHAKE		HI	ATO	COLLECT, GATHER
	KO	HI		COLLECT GATHER PLUNDER
			KOHA	heartburn
	HI	KA	HIKA	LINE of Descent as an
	A	HI		FIRE [accumulation]
	A	HI	KI	HATRED
		HI	WI	Line of Descent
		HI	WA	POTATO
		HI	WA	Vigorous of growth
		A	KO	teach Learn.
			KO	Dig or plant with a KO
			KO ANGA	Planting time spring
			KO KO	WIND
			KO AHI	gossiping
			KO EHU EHU	MISTY
			KO AREARE	a variety of TARO that SUCKERS
			KO EKE	OLDMAN throws out runners!
			KO HA	SURPLUS

<p>PALI MĀORI</p> <p>SK MĀORI</p> <p>WIAKIA</p> <p>PALI</p>	<p>RĀ</p> <p>RA TO RA I HE</p> <p>KO</p> <p>RA RA</p>	<p>SI</p> <p>TO HE HI HI HI</p> <p>SI</p>	<p>KO KO HI KO HA HA HA KO A HI WA I A KO RA KO RA KO RA HI KO</p>	<p>ACCUMULATION</p> <p>COLLECT GATHER PLUNDER</p> <p>SURPLUS</p> <p>HAPPYNESS</p> <p>HAPPYNESS</p> <p>GOSSIPING</p> <p>BE-DISTRIBUTED</p> <p>FENCED SMALL STOCKADE</p> <p>POTATO</p> <p>how many?</p> <p>COLLECT GATHER PLUNDER.</p> <p>fine fuel</p> <p>DISTRIBUTE in small fragments</p> <p>Size Extent Large</p> <p>Size Extent Large</p> <p>ACCUMULATION</p>
<p>PALI dial! MĀORI</p>	<p>RA RA RA</p>	<p>JA NGA NGA TIRA</p>	<p>RA RA HU</p>	<p>KING</p> <p>Commander ITU</p>
<p>PAL MĀORI</p>	<p>RO RO</p>	<p>GO NGO NO NGO NGO NGO</p>	<p>A NOPE NGO NGO IO</p>	<p>ILLNESS</p> <p>Medicine</p> <p>express distress</p> <p>Strength Energy</p> <p>SICK PERSON INVALID</p> <p>ASTHMA</p>
<p>PALI MĀORI</p>	<p>BA -BA KA HI PA PA TA</p>	<p>HU HU SI HI HU HU HU HU</p>	<p>LI-KAR LA KA KA RI KA -KI A NA</p>	<p>CULTIVATE</p> <p>[at end of Compounds] CULTIVATING</p> <p>CULTIVATION</p> <p>CULTIVATE PLANT-</p> <p>R-1 dig dig up [MĀRI = GARDEN]</p> <p>YOUNG SHOOT-SPROUT SEED TURN TO</p> <p>CLEAR from WEEDS [SET ABOUT]</p> <p>brushwood screen.</p> <p>PRODUCT ABUNDANCE</p> <p>A CULTIVATION</p>

SK MAORI	U A	DA KĀ M PA H	A MEDIUM of FLOATING WATER AS PERSONIFIED SENTIENT BEINGS
MAORI	U	TA	Reach land arrive by WATER
		TA - I	LOAD OR MAN A CANOE
		TA - U	SEA TIDE WAVE RAGE
		TA - HO E	COME TO ANCHOR
		TA HE KE	SWIM
		TA KA	DROP as liquid waterfall
		TA KA - RU	Batten on a Canoe
		RU - MAKI	Splash about flounder DROWN
		TA KERE	Aspect set about doing
		KA TO	KEEL of a CANOE (anything) FLOW of the TIDE
SK MAORI	A	PA H [A] HA - ROTO	water as personified SENTIENT BEINGS POOL
	A	PA	Spirit of one Dead
		PA HIHI	Well up Spring
		PA HO	SOARING FLOATING
PALI MAORI	E E	KA TO KE	ON the ONE SIDE [as opposed to the other]
		TŌ KE RE	NOM PLURAL CASTONETS
		KE TO	EXTINGUISHED
		TO KE	COLD [TŌ KERAU AUTUMN]
		KE RO	DEAD
		KA - E - A	LEADER of a FLOCK of KAKĀ
		KA - E - A - EA	FOOL YOUNG of INANGA
		KA TO - A	all the whole.
	E	KE EKE	Arrival of guests
		TO - E	SPLIT DIVIDE [TŌ HE THIEF]
		KA	HOME [TŌ HI DIVIDE SEPARATE]
	TA	TO - U	WECUS [TO - U THY]
		KA HA	Boundary line of land
		KA IA	STEAL THIEF
		KA TO	FLOWING FLOOD of the TIDE
		KEI	at in on of place in of time
		KE HO	peak of a HILL TOP see TALL/LONG

SK	SŪ	TRĀTMAN	BREATH THREAD that traces to the SUN
RVED	SE	TU	LINE, = BRIDGE
ROOT	SI		TO ATTACH as early bridges made of ropes lit tied one bank [to another]
MĀORU	[TU	PONATIEINAKNOT]	the Bridge is the RAY of the SUNS LIGHT [SNOGDASS SYMBOLISM of the STUPA page 286
SK			
MĀORU	HE	I	SKY
	HE	RI	CARRY
	HE	RE	GUIDE
	HE	MA	VOID
	HI		catch with a hook; line down.
RA	HI	RI	ROPE
WHAKA	HE	KE	Rape.
	HE	RE	TIE UP fasten with cords
	HI	HI	RAY of the SUN
	HI	KI	Left up raise CONVEY Set out move take away.
	HI	KITOREA	DIRGE + gesture's
	HI	KOI	STEP
	HI	KU	Rear of an Army on the March. at in on of place.
	HE	I	GO TOWARDS
	HE	I	Migrate
	HE	KE	indicates direction or movement onwards away from the speaker in ref to either time or space.
	A	TU	time past the future
	TU	A	Stage of a journey
	TU	ĀOMĀ	RAINBOW
	TU	Ā WHIO RANGI	RAINBOW
	TU	HOPĀ	high of the Sun on the MERIDIAN
	TU	I TUI	LACE SEW FASTEN UP
	TU	HO NO	JOIN
	TU	TUKI	reach its furthest Limit Extend
	TU	KĀUATI	WHIRLWIND [-> ASCENTLY WIND!]
	TU	KU	Catch in a Net WEB of a Spider
	TU	PIKI	BIND SECURELY

SK	SAM A HI TA	UNIFIED
SK	SAM - A - DHA	TO PUT TOGETHER MAKE TO MEET
MAORI	HANG - A	MAKE BUILD PEOPLE PROPERTY
	HANG - A - I	HEAD of a TREE
	HANG - A - I	OPPOSITE CONFRONTING
6	HĀ	BREATHE
=	HANGA] = NGA	THATCH da HOUSE
	HAM - O - KO	JEST WITH
	HANGA RAU	A NECKLACE of SEA SHELLS
	HANGA ROA	FORESTLAND Dense brush
	HANGA RURU	Earth Oven.
	HANG - I	SHOVEL DIG or PLANT with a Shovel.
	HANG - O	odour taste flavour
	HĀ	Capture a fort catch in a Net
	HĀ	take up carry advance guard
	HĀ PAI	BETROTHED
	HĀ PUI	DANCE SING JOY
	HĀ RI	Gift present feast
	HĀ KA RI	STORAGE PIT
	HĀ PO KI	feel for with the hand.
	HĀ RAU	of belonging to possessed by
	Ā	Carve fashion dress timber
	TA	paint tattoo beat with a stick
	TA U	SING
	TA U	LOVERS
	TA U	ATTACK
	PA TA KA	food Store
	TA HU	HEAP of food at a feast
	TA HŪ	RIDGEPOLE da HOUSE
SK	SANĀ - HI - TA	ALL the BEAMS da Roof are met together
	HI HI	in the KING POST of a HOUSE
	HI - A - NGA	FRONT GABLE of a HOUSE
	HI - A - PO	ACT of RAISING
	HI KU HI KU	ASSEMBLE GATHER TOGETHER
	HI	BEAMS of a HOUSE
	HI KI	Catch with a HOOK i Line Raise
		LEAD a SONG DAWN draw up
		Lift up raise

PALI MFAORU	GI TAM	TAM	SINGING DIRGE SING RECITE DIRGE
	TA TA TA	NGI U KI	
SK	GI TA	TANG-I	SONG
PALI MFAORU	KO AKO	VI DA	LEARNED KNOWING WELL POETIC, TEACH LEARN Can be able Relate Recite
	WHI WHI	TI	TEACHER
	TA TA	UIRA TAI	study the heavens in [navigation]
PALI MFAORU	GA NGA	MO RE	VILLAGE FAMILY GROUP PROPERTY MAKE BUILD [PEOPLE
	HA NGA		
HA UKAI	NGA		VILLAGE
		MO A	Raised plot in a Garden.
		MO ANA	Roof of a stone pit
		MO E	Sleep Repose die marry [Beget]
		MO KO PUNA	Grand child
	[=	MO TORO	WOOD]
		MA TORO	WOOD]
		MO TU	ISLAND
	[A	MOU	keep a fire alive by covering with ash's
	[A	MO]	CARVED POSTS SUPPORTING the
	[A	MA]	MAIHI of a HOUSE
	[A	MO]	Ritual presentation of first fruit to TORANGA on lifting a
	A	MO RANGI	CHIEF PRIEST LEADER
	A	MO HANGA	STAGE for STORING food

PAU MFA021	[G]	GA H NFA - RAHU	SEIZE GRASP TAKE HUNT WITH DOGS.	
PAU " " " " " "	H H H H H H H H H H	AR AR AR IR IV IV AR -R R AN AT	GROW OLD OLD AGE OLD BECOME OLD AGE LIVE BECAUSE MAKE A LIVING LIVELY HOOD OLD MAN ALIVE LIVING HEALTHY LIVELY HOOD LIVING OLD MAN [FOOD IS]	
MFA021		KA -R R AN AT	BE BORN [MARI ANA WHEN IN BIRTH] [FUTURE TIME]	
PAU MFA021		KA -R R AN AT	field of operation SCOPE of WORK OLD MAN ANCIENT WORE TIME proper time POET MAKING	
MFA021		ROPI ROPA	PERSON SERVANT	
PAU MFA021		THE RO RO KA LO TE TA HI	NGO HI	KA = whatever causative prefix ROA LONG of time Delayed. Elder monk hear obey TIME proper time ONE A CERTAIN ANOTHER ONE --- the OTHER, EACH definitive pronoun. used epithetically
PAU MFA021		TE ROA RA RO T AT AN AI AN	AI ANFA NAKU I A A	LONG of TIME [and absolutely] often = 3rd person HE passage of time CONCEIVE offspring HEREAFTER [as born in] Capulate his her

SK MĪΘRA - VA RUNA
 MĀCĪ HIWA
 SK921 VA RU NA

the Twin Gods of DAY & NIGHT 13
 DARK RA DAY
 'ALL ENVELOPING SKY, [IN VEDA associated with MĪΘRA [DAY] & VARUNA PRESIDING over NIGHT [the oldest of VEDIC GODS], i.e. KING of GODS. HE SENDS HIS MESSENGERS [SPIES] / EYES / STARS throughout the worlds. he hates falsehood & seizes sinners with his PĀSA [NOOSE] inflicting disease. HE IS LORD of the UPPER & LOWER WATER'S and especially the LORD of RIVERS. he is brother of Agni-fire & DARK/LIGHT

SK921 VA RA
 from V RI
 MĀCĪ WA
 WA HO
 WA I P U KE
 WĀ WĀ

ENCLOSING ENVIRONMENT
 DEFINITE SPACE AREA TIME
 the OUTSIDE [SEASON
 FLOOD
 FENCE
 STORM WIND RAIN

SK217 U- RU RU
 RU A

the Earth WIDE SPACE ROOM SCOPE
 ABYSS into which heavenly
 bodies set & from
 which they rise
 watery potatoes frosted

WA RI
 NGA RA NU
 RU NG A
 RU NA NGA A

LEADER COMMANDER [mildew]
 up above over upon
 take counsel discussion
 an assembly

WĀ WĀ
 WĀ WĀ
 WA E
 WA E - NGA
 WA R - BA
 WA OW AO
 WA OKU
 WĀ RA
 WĀ - RE
 A WA
 WA RO

INVESTIGATE ADJUDICATE ON
 JUDGE
 the middle the MIDST
 NUI THE INTERVENING SPACE
 UNCONSCIOUS [the midst
 OBSCURATION
 DENSE forest
 BURIAL CAVE SK BHARA]
 BARRACK HOUSE [bear carry]
 RIVER
 Abode of the dead hole pit

SK UPA-S TU TO INVOKE CELEBRATE IN
P UPA- S TAU TI SONG PRAISE

MAORI U ME RE CHANT
TAU SING
TA-KI RECITE

WAKA - - TU FORMAL or SET SPEECH
TUA PROPITIATE with an OFFERING
TUA HU SACRED PLACE
TUA KAHU OVEN for RITUAL FEAST

- TI RI offering to a God share
TUA PROPITIATE WITH AN OFFERING [portion]

PA O A TU A Gods Azura etc
SING

TU WHIRI Disclose Reveal
TU TA WAKE DEDICATED TO A GOD
[Effect by prayers]

[TU RU] MOON ON 16TH DAY
= O TU RU] FULL MOON

WAKA TU RI PROPITIATE
TU RE HU GHOST
TU PUA = DEMON
TU PURE Some Ceremonial PURE?
TU PUA = TOHUNGA

TU-PA-OE VOICES HEARD
SINGING AT NIGHT
[AS APSARA'S?]

SK U PA-STU TU-PA CHANT SONG
INVOKER CELEBRATE IN SONG
PRAISE

TUA KAKA Ritual oven used in
TUA HU SACRED PLACE [Feasts]
TUA TIME PAST FUTURE

SPANISH	TACO	> SKIN	re person?			16
See POLY				KO	NA	NEIGHBOUR
PALI	GA	HA	PA	TI	KO	HOUSEHOLDER
	GA	HA	PA	TI		MAX HOUSEHOLDER
MARATI				KO	- PA - E	CIRCULAR HOUSE
	NGA	- RE				FAMILY GROUP
HA	NGA					PROPERTY PEOPLE BUILD
	W	HA	RE			HOUSE PEOPLE IN A HOUSE
				KO	HU	PARA COOK IN A VESSEL
	HA		KUI			Mother
	HA		MUA			Elder brother or Sister
			PA			father
		A	PA			SERVANT
			PA	PA		Earth floor of a HOUSE
			PA	KEHA		POM
			PA	KA		COOK [KO HA PA OVEN]
			PA	HUNU		fine [OGNISKO Domowy]
			PA	HI	KA	Clear from weeds
			PA	E		Surround with a border
			PA	E	NGA	SITE of BUILDINGS
			PA	PA		Elder's male Relatives
				KO	HI	FRONT of a HOUSE
			A	TI		OFFSPRING
				TI	A	MOTHER SERVANT
				TI	NAKU	CONCEIVE BEL in a GARDEN
				TI	EKE	Measure ground plans of
				TI	A	STOMACH a HOUSE
				TI	ETIE	BREAK UP FIREWOOD
				TI	A	ROA FENCE ROADWAY
				TI	HERU	BAIL A CANOE
				TI	KANGA	CUSTOM RIGHT CORROD
					KO	IRI PLANT [JUST FAIR
				TI	MA	CULTIVATE SOIL
				TI	KI	KIWI finish of THATCH of a
				TI	NA	NA PERSON [HOUSE]
				KO		DIG a PLANT WITH a KO
				KO		TO AT of place.
				KO	ARO	BLIGHTED of CROP'S
				KO	HA	Respect Reguard.
				KO	HAKA	OLD MAN FATHER

PA LI GA HA PA TI KO
 MAO RA NGA RE
 HA NEA
 HA KUI
 HA MUA
 HA —

HOUSEHOLDER
 FAMILY GROUP
 PROPERTY PEOPLE
 MOTHER
 Elder brother or sister
 FATHER OLD MAN

KO- RO
 KO- PU HA
 KO- PU KE
 KO- PU RA
 KO- PI- HA
 KO- PA NI
 KO- PA PA
 KO- PA E
 PA PA
 KO NA
 KO NE NE
 KO KA
 KO KA RA
 KO IWI
 KO HU PA RA
 KO HU A
 KO HI KA
 KO HA KE
 HA KUI
 KO HA NEA

SMALL HOUSE
 prepare for PLANTING
 tubers for planting
 [OLD PERSON]
 STORAGE PIT
 ENCLOSE SHUT IN
 FOOD STORE
 CIRCULAR HOUSE
 earth site of a HOUSE
 Neighbour
 STRANGER
 MOTHER
 TRUE MOTHER ONLY
 PERSON
 Cook in a VESSEL
 OVEN
 ANCESTOR
 FATHER
 MOTHER
 NEST BIRTHPLACE

HAW

TI ETI B
 TI - A
 TI
 TI

HA
 NGA
 NGA - I
 NGA
 W HA NAU
 W HA NGA I

Respect regard.
 present Gift
 Break up firewood
 Mother servant
 OFFSPRING
 CLAN PREFIX
 CLAN PREFIX
 PEOPLE
 family group be born
 FEED NOURISH REAR MAINTAIN

MĀORI
PALI
PALI

KA NO I
JA NO
CA R

TRACE ONE'S DESCENT 18
PEOPLE PERSON COLLECT/STING

PROCEED LIVE
CONDUCT ONESELF CARRY
ON GO ON A MISSION

CA RI KA
CA RA
CA RA
CA RA
CA RI Z
CA RI Z

JOURNEY TRAVEL
LIVING

CONDUCT GOOD CONDUCT
FOOT [POETIC]
CONDUCT WAY OF LIFE
LIVING BEHAVING

KA RA
KA RA

(CARRYING ON GOING ON
OLD [MĀORI] A-RA WAY PATH
OLD AGE [MEANS OF CONVEYANCE]

KA AKI RI

BORN [of]
CIVIL WAR

MĀORI

KA RA O
KA RA O

ALIVE LIVING
CALL SUMMON WELL COME

KA RA O
KA RA O

of belonging to possession of
of belonging to] ITO
ALIVE LIVING

KA I N GA
KA I N GA

fulfill its proper function
have full play

HIKA HI

KA I N GA
KA I RA U

FIELD OF OPERATION SCOPE of
DIRECT LINE of DESCENT [WORK]

KA I RA U
KA RA

Body of MEN SKILLED
COURTEZAN [AT ARMS]

KA RA KA
KA RA KA

THIEF
OLD MAN CONSPIRACY

WAA TI

KA RA KA
KA I N GA

RE SEND URGE
WALK STEP OUT

KA I N GA
KA I N GA

RIGHT CORRECT JUST FAIR
KEEPING A DIRECT COURSE

WAA TI

KA I N GA
KA I N GA
KA I N GA

CUSTOM RULE CORRECT RIGHT
SET OUT on a JOURNEY

KA I N GA
KA I N GA

CHIEF LEADER [WAY PATH]
TI RA Nobility Aristocrat
GO TRAVEL
WANDERING
LINEAGE

PALI JAN
 JAN AT
 PALI - J A C CA
 MAORI TAN GAT A
 NGA A
 NA A
 AN A - MTA
 AN A - MTA
 AN A KE
 AN - A
 PUT A

BE BORN
 THE PEOPLES
 BY BIRTH
 THE PEOPLES [plural] [TANGATA]
 MAN IN KARAKIA [MAN]
 INDICATING LINEAGE
 HUSBAND WIFE SLAVE'S
 COPULATE
 hereafter
 WITHOUT EXCEPTION
 CONTINUANCE of ACTION
 [a STATE]

PALI J
 MAORI I
 V O
 - O
 RA O
 O
 O - RIORI CHANT
 O

BE BORN
 SOUL LIFE PRINCIPLE
 See
 LIFE PRINCIPLE
 RONGO NUI See
 RONGO MAI WATTI SACREDNESS
 of belonging to possessed by

PALI CI
 passive CI
 MAORI KI YATI
 W H A KA KI
 KI RTI
 PALI CI
 MAORI TAM
 TAM - U
 TAM - I - NA
 KI TE
 TAMA
 TAMAITI
 TAMOU

BE PILED UP BE BUILT UP
 FULL
 FILL
 offspring
 TO of PLACE INTO ONTO
 THOUGHT MIND HEART,
 P. MUL
 NA DESIRE GREATLY
 See perceive look examining
 SON [TAMA NINE DAUGHTER
 CHILDREN
 LOVE ARDENTLY

PAU CHA MA
 MAORI KA RI
 MA RA
 MA EA
 HA NGI
 KA
 HI KA

EARTH GROUND
 DIE DIE UP
 a CULTIVATION
 EMERGE AS A CROP
 Earth EVEN
 HOME
 PLANT

PAU JI
 MAORI - - -
 RR -
 RR -
 RR -

Become OLD AGE
 MATA FORMERLY
 TANGATA LIFE PRINCIPLE of MORTALS
 ATUA LIFE PRINCIPLE of
 DIVINE BEINGS

PAU JI V HA
 MAORI HA
 HA KA RI

TONGUE
 Taste flavour
 feast

PAU SA R
 MAORI HA R - I
 HA ER E

MOVE
 CARRY
 come go depart

PAU MA HA RA
 MAORI MA HA NA
 RA NGI

REMEMBER
 Remember
 Stanga time

PAU SAM LAKK H
 MAORI RA K -
 RA K -
 RA
 HAN GA

OBSERVE
 A UMATOHI MOON on 18th DAY
 Adorn Bedeck
 there gender
 practice habit

PAU SA VA KO
 MAORI A KO
 WA NA NGA
 HA E PAPA

PUPIL
 PUPIL TEACHER
 Lane of TOMUNGA
 STRAIGHT CORRECT

PALI	SA	VE	TAR	RECITER
MFAORA	HA	EPAPA		Straight Correct
WAARKA		TAR ^H A	HA	INVOKE CONSULT
		TA	KI	Recite
	A	WHE	RA NEI	DEFENSIVE PRAYER
		WHE	A KO	KNOWLEDGE
		WHE	I RO	Be understood
Note		TAR	-A	Effect by prayers
		TAR	-A	Gossip, Missionaries? again?
		TAR	GAU	CONCEAL SECRETLY
		TAR	-INGA	Ear
		TAR	-URU	Require entrance? >>>

PALI	PA	BBATO		MOUNTAIN
MFAORA		TO	I	PEAK SUMMIT

PALI	PA	BHA		RADIANCE LUMINOSITY
MFAORA	PA	HU NU		BURN FIRE
	PA	HU NU		BURN FIRE
	-HA	TETE		FIRE

PALI	KA	P-	PO	AEON
MFAORA			PO	AEON of TIME
TA	KA			Come Round as a Date
				or time Revolution circuit

PALI	BHI			Be afraid
MFAORA	WI	NI	WI NI	Dread terror
	WHI	RO		Evil Bad.
	WHI	TI		Start Be Alarmed.
	WHI	-U		KILL WHIP CHASTISE

PAU

PE

INO AND SOON INO

PE KHITTAR

LOOKER ON OBSERVER

MAEPA

RIPE KA

LYING ACROSS ONE ANOTHER

PE NA

DO IN THIS WAY SO LIKE THIS

TAR-I

WAIT EXPECT

TAR-I

UREE INCITE

TAR-IA

BE WAITED FOR

TAR-IOI

LOTTER

TAR-O TARO CUT ONE'S HAIR

TAR-ORI DISAPPEAR

TAR-URU ENTICE

TARE KOREKO OUT OF SIGHT DIMLY SEEN

TAREHU COVER CONCEAL

TAR-WE WEHI TERRIFYING

TAR-ARIKI persistent drizzling Rain

TAR-A RAYS of SUN before SUNRISE

WAAPA

TAR-A TATOO Beside the NOSE

TAR-ARO Adorned ornamented a

canoe with PLUMES AND
[CARVINGS]

KIT-E

See percieve look examine

KI

Call say tell designate think
something to BE

HIN APO

DIMNESS of SIGHT

DIMNESS of MIND in Regard
to spiritual matters

TA

Carve fashion Paint Tatoo

TA

HUNA Battlefield

SK

BHU

YA

BEING BECOMING

PAU

YA

GO

MAEPA

A

DRIVE UREE COMPEL

A-HU

WHENUA INDUSTRIOUS

A-PU

QUALL GUST of WIND

PU - A

FLOWER SEED

PU

ORIGEN SOURCE ORIGINATE

PU - A HEI RI

SNOW

PU PU

BREAK forth Spring up

	MAORI	TU	TA	NGA	PORTION DIVISION [TIRI SHARE PORTION]	24
See	PALI	TU	= TI	- See	PALI TU-EWA = TI-EWA	'ENO QUOTE,
SK		DVA	RA		DOORWAY	
MAORI		WA	HA		GATE ENTRANCE	
			RA		DAY SAIL SUN	
		A	RA		WAY PATH	
		WA	HA	ROA	Entrance to a fortified PA	
		WA	HA	PO	MOUTH	
		WA	HA		VOICE SHEET of a SAIL	
		WA	HA	RUA	Ratrap with 2 entrances	[POU MUL]
		WA	HA		Mouth Entrance	
		TUA	- HU		SACRED PLACE	
		TUA	ONE		BEACH	
		TU	KI		Attach	
		TU	KU		WEB of a SPIDER	
		TU	MA	HOE HOE	VERTICAL HIGH of SUN	
					[Gate of the ZENITH]	
		TU	PE	RE	Calculate POU MUL	
		TU	RUA		BURROW of a Bird or Lizard	
		TU	WHERA		OPEN	
		TU	WITI		Expell Banish	
			RA	NGI	SKY heaven Stanzas	
			RA	HE	Fenced.	
		ARA	HA	NGA	= ARA WHATA Ladder Bridge	
SK		ARA	HA	T	MOVER'S AT WILL, [i i i lit]	
MAORI		ARA	A		way path means of conveyance	
WAKA		ARA	A		MARAUDING BAND ENEMY	
			HA	TE PE	Move in orderly manner follow	
			HA	ERE E	in regular Sequence	
			HA	ERE E	Come go reach arrive Become	[he Effused]
			HA	ERE E	a Spirit in detached clouds.	
		ARA	A	NGA	Rise to the Surface appear	
WAKA		ARA	A	NGA	Appear in a VISION	
		TA	HA	KURA	Dream of one Dead.	
			HA	T - E - TE	Fire	
		ARA	A	WHA TA	LADDER BRIDGE f i LIT	
		AR	- KI		PREST LEADER CHIEF.	

(Snodgrass STOPA)

See PUNGAWERE WERE PAGE C2

SK DHARMA

ROOT DHR

DHARMA

] TO CARRY BEAR = SUPPORTER

and the Substantial waters Sustain the [Universe] as the SUBSTANCE of the WORLDS AND the SUPPORT of ALL PHENOMENA which are therefore called DHARMAS

FROM ROOT

DAR
DHARA NI

comes the word -
LIT SUPPORT,

FROM ROOT

DHR
=> DHRU

is connected with the ROOT -> DHRU

and

DHRUA
DHARMA

the POLE by this association is linked to concepts of AXIALITY Abyss of heavenly bodies into which they descend i from which they RIVER [of LIFE see] [Rise] Revolution Circuit come Round as a Date or time

MATERIA

RUA

A-WA

TA KA

Cycle of Seasons ITO

TA U
RA NGI

SKY HEAVEN DIVINE BEINGS
time Season. ITO

TA KA

TURN on a PIVOT REVOLVE

SK

DHARMAS
VAC

are the Waters

and the waters = the LOGOS the word As do the waters pervade the Earth i heaven separated into many portions i assigned to many abodes widely Connected [by family ties] pervading

MATERIA

VAC
TARU NA

It is the WORD or VOICE whose cradle is many abodes widely pervading

See

Christian
the

Logos in the Beginning was the WORD
WATERS of Eternal Life

MATERIA

WA HA
WAI
WAKA

VOICE

Memory

Medium of a God. ITO

SK

VAC

sustains the Earth as do the Waters and pervades the Universe

~~XXXX~~

SK 573	PAK SHA		SIDE OR HALF of ANYTHING
PAU	PAK KA		RIPE
SK 575	PA C		RIPEN COOK MATURE
PAU	HA RI	TA KA	Green fresh,
MADZI	HA		taste flavour odour.
575 SK	PA C		Ripen cook mature bring to
2nd sing	PA PAK THA		[perfection]
ROT	PA KSHAT		
MADZI	PA KA		COOK lot of the SUN DRIED
		TA HU	COOK [PROVISIONS]
	PA KA	HUKAHU	STRENGTH
	PA	HA KE	ADULT
XX	PA PA		the Earth in Relation to
			Range as now MATURED
		-HA	RETO RIPE FRUIT of POROPORO
	PA KA	RI	MATURED RIPE STRONG
PAU	PE		incl AND SO ON TO
>	PEK KHIT	TAR	LOOKER ON OBSERVER
MADZI	PE NA		EU IN THIS WAY LIKE THIS IN THIS
	PEK	E KI	BECOMPLETED [CASE]
		KI	FULL [WAKA KI FILL]
		KI	SAY TELL CALL DESIGNATE CONSIDER
		TAR	I WAIT EXPECT [ANYTHING TO BE
		T	A RAYS of SUN BEFORE SUN RISE
PAU	BA LI		Religious TAX or CONTRIBUTION
MADZI	JI RI		SHARE PORTION
	RI PA	NEA	HEAP
PAU	BHI N KA	RO	CEREMONIAL WATER VESSEL
	KA HA		KA = PAHAKA medium sized CALABASH
	KARU		SPONGY INSIDE of a GOURD
	KARO		PICK out of a HOLE [RO TO INSIDE
		RO	NEOMAI WHITI SACREDNESS
	PI - A		first order of Learners of ESOTERIC
HATE	PE		PROCEED [IN ORDERLY MANNER] [LORE]
PAU	BA LA		FOLISH [FOLLOW IN REGULAR SEQUENCE]
	BA LO		FOOL