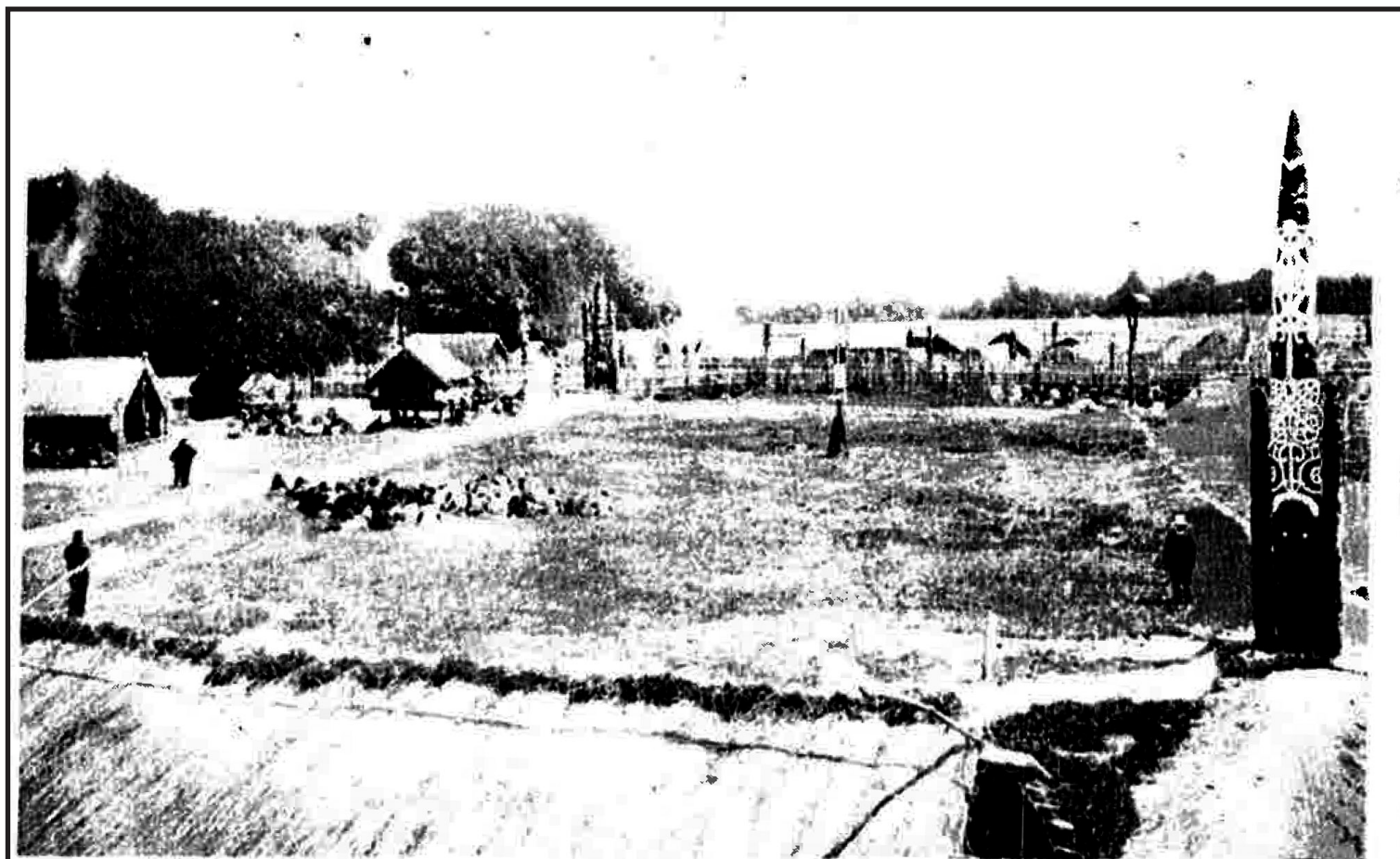


# KSHATRĪYA-JĀTI

S. K. Mitra  
J. R. S. S.  
Adele Schaeffer

J. J. Joshi  
OMAU, KAWAIA  
AOTEAROA

11 August 2015  
[32 pages]



MĀORI STOCK-RAIDING VILLAGE

Mount St. George Village (some distance off) with Awhitu (west) Boundary Post in foreground (left-hand side) and a large (right-hand side) enclosure.

|     |                |                               |
|-----|----------------|-------------------------------|
| 1   | PARI-SABHYA    | members of an Assembly        |
| 2   | YUGA           | a YOKE TEAM                   |
|     | YU             | unite join                    |
| 3   | YU             | dual; plural base of 2nd pers |
| 4   | KAULIKA        | ancestral                     |
|     | YUTA           | attached fastened added to    |
|     | YUK            | BADLY ILL                     |
| 5   | YU JYĀ         | going moving                  |
|     | YUDH           | to fight want                 |
|     | YOD-DHAVA YA   | to be fought                  |
| 6   | YUSA MAYA      | see Seeking you               |
|     | YŪTHĀ          | herd flock                    |
| 7   | YENA met of YA | by whom which where           |
|     | YA             | a goat                        |
| 8   | YA             | a goat                        |
|     | YABH           | sexual intercourse            |
| 9   | YA NAKA        | a vehical                     |
|     | YA PA          | causing to come or go         |
|     | YĀ NA          | Leading conducting            |
|     | YAT            | going moving                  |
| 10  | YATAVA         | to be gone or marched.        |
|     | YATIKA         | A traveller                   |
|     | YATU           | wind one who goes             |
| 11  | RANGA          | field of Battle               |
|     | RANA           | a King                        |
|     | RANI           | a QUEEN                       |
|     | RATU           | true Speech.                  |
| 12  | RATHA          | Goer                          |
|     | RAVANGA        | Roar yell.                    |
| 13  | RAS            | Roar yell                     |
| FOR | ARASI          |                               |
| 14  | RAVISHU        | God of Love                   |
| 15  | RA             | giving effecting              |
|     | RASA - KHANA   | digging in the soil           |
|     | RA JRB         | LOVE speed giving             |
| 16  | YAUTIKA        | Suitable fit                  |
|     | YAU NA         | Connection by marriage        |
|     | YOUSMAKA       | YOURS                         |
|     | YAU SHIN YA    | WOMAN HEAD                    |

|          |           |              |   |
|----------|-----------|--------------|---|
| 17       | U         | SHAS         | DAWN MAIDEN   |
|          | YU        | VATI         | girl  |
|          | US        | RAS          | morning light                                       |
|          | US'       | RI           | morning light                                       |
|          | US        | RA           | SUN DAY day break                                   |
| 18       | YU        | <sup>2</sup> | unite fasten  |
|          | YU        | TA           | fastened added united                               |
|          | BHAVA     |              | coming into Existence                               |
|          | BHAVITA = | BHUTA        | become been   |
| 19       | U         | HU           | Bearing carrying                                    |
|          | U         | DHI          | the act of bearing carrying                         |
|          | BHA       | VAKA         | } Being Existence                                   |
| =        | BHAVA     |              |   |
|          | BHA       | ANTA         | TIME virtuous wife                                  |
| 20       | BHA       |              | shine be bright                                     |
|          | BHA       | NU           | appearance lustre King<br>master Lord handsome wife |
| 236 SK   | 21        | O            | MA friend helper protector                          |
|          |           | O            | MAN help protection kindness                        |
|          |           | O            | HA bringing near causing to approach                |
|          | 22        | È            | HA " " " " " "                                      |
|          | 23        | AVA          | DHI attentive neighbourhood hole                    |
|          |           | AVA          | DHI watch wait for lie in weight for                |
|          | 24        | AVA          | DO } cut off divide                                 |
| ind plus |           | AVA          | DAY } burn catch fire                               |
|          |           | KS           | HAI harsh sound hard solid                          |
|          |           | KA           | KKH go between negotiator                           |
| 25       |           | KHA          | TAKA the Sun  |
| 26       |           | KHA          |   |
|          |           | KHA          | cavity hollow cave action                           |
| 27       |           | KHA          | RNA 2nd YUGA of the world                           |
| 28       |           | GAYA         | house property goods family                         |
|          |           | GRI          | MAN Dignity venerable                               |

|           |     |    |    |           |
|-----------|-----|----|----|-----------|
| SK        | PA  | RI | SA | BHYA      |
|           |     |    | SA | BHA       |
| M A o e l |     |    |    | WHA -     |
|           |     |    |    | WHI TU    |
|           |     |    |    | WHI - U   |
|           |     |    |    | WHA N - U |
|           | PA  | -  | -  | HI        |
|           |     |    |    | WHI - RI  |
|           | PA  | E  |    |           |
|           |     | RI | RI |           |
|           |     |    | HA | NGA       |
|           |     |    | HA | RI        |
|           |     |    | HA | KA - RI   |
|           |     |    | A  | WHI       |
|           | WHA | KA | -  | WHI - RI  |
|           |     |    | HA | PA I      |
|           |     |    |    | WHI - TU  |
|           |     |    |    | PI A      |
|           | PA  | RA |    |           |
|           |     |    |    | PI PI     |
|           | PA  | RI | TO |           |
|           |     |    |    | PI O      |
|           |     |    |    | PI TO     |

MEMBER of an ASSEMBLY

NA COMPANY PARTY PEOPLE

7 AN INDEFINITE NUMBER of

GATHERED TOGETHER [PEOPLE]

FAMILY GROUP

SECTION of a CLAN

FLOCK

MULTITUDE

BATTLE

PEOPLE [SA/SAM]

DANCE SING

FEAST

BESIEGE

DECIMATE A CLAN ONE by ONE

ADVANCE GUARD

7 of an indefinite number of PEOPLE

first order of learners of

BLOOD RELATIVE [love Exotic]

Young men in Vanguard of an

OFFSPRING [Army]

MANY

TOTO Blood Relative

|           |    |     |    |         |
|-----------|----|-----|----|---------|
| M A o e l | UT | A   |    |         |
| SK        | UT | TO  | RA | NA      |
| See       | UD | I   |    |         |
| M A o e l | U  | ENU | KU |         |
|           | U  |     | RA | NGA     |
|           | UT | - U |    |         |
|           | U  |     | RA | NGA     |
|           |    |     | RA | NGA - I |
|           |    |     | RA | NGA     |
|           |    | TO  | E  |         |
|           |    |     | RA | KAI     |
|           |    | TO  | I  |         |
|           |    | TO  | RE |         |
|           |    | TO  |    |         |
| TE        |    | TO  | RA | TO      |

inland opposed to the Coast

DECORATED WITH RAISED

ARCHES or UPRIGHT ARCHES

Rainbow

GLOW of SUNRISE or SUNSET

FRONT PART of a WHARF

REACH / ARRIVE by water

Raised Elevated

Raise coast up frame for

DRAWN [chessing the hour]

ADORN BEDECK

peak summit CITADEL

ROUGH SEA [of a PA]

SET as the SUN

the WEST

up to as high as

SK 804  
MIBORU

YU GA  
U NEA  
U NEA I  
U NEA HU  
U TA  
U HO NO  
NEA RE

a YOKE A TEAM RACED Men.  
TEAT  
Send Urge.  
clam precise  
hunt with dog's  
Lead a man a canoe.  
JOINED CONNECTED  
family group

SK

YU TIA

attached fastened added united  
combined joined provided with  
filled with covered with  
accompanied by + INST occupied with  
performing Sacrifices

MIBORU

U  
U HO NO  
TA NE  
TA  
TA TIA  
TA E  
TA MAIM  
TA KI  
TA KI URA  
TA U  
TA U  
U MERE

TEAT  
Joined  
husband.  
TATOO  
Semen.  
Color dye.  
child  
Recite  
Sacred food.  
attack  
Lover  
chant

SK

YU

unite join to draw towards oneself  
take hold of. hold fast worship  
teat

MIBORU

U  
U HO NO

JOIN ADD  
BE FIRM BE FIXED

WIFAKA

U

stocks home of Weapon's  
KEEP TOGETHER as a BODY of MEN  
Bring to Land.

853SK

YU

the actual base of the DUAL i PLURAL  
NUMBER's of the 2nd pers pronoun  
pronominal suffix of 2nd person SINGULAR  
MIA-U NA-U - TA-U ITO

See

[YUSA MA base 2 pers plural]

MIBORU

U

See

A - U

SK 853 YU

THE ACTUAL BASE of the DUAL AND PLURAL NUMBERS of the 2nd per pronoun [SEE YUSMĀO]

SK 855 LOC

YU SH MĒ

the actual base of the 2nd person pronoun in the plural number

SK 855

YU SH MA

from gen

YU + S MA

MA KA

pronom - suffix of 2ND PERSON SINGULAR of thee

MĀOZI

U

Ō

MA TORO WOO

MA TORU CROWD

MA TUA parent

TA MA I TI child

TA MA Oldest son child man.

ME NE BE ASSEMBLED

MA - U pronom 2nd pers sing U + MA

for thee for you.

MA - U - A 1st person Dual excluding person addressed WE TWO

TA U

TA NEATA Stranger

[OUSTWO]

MA RIRI Love.

MA ORI See in this sense.

MA DUAL marriage Relationships

MA HA KU for me.

MA HANA for him

del pronom [plural of TĀU] THY WE including person addressed.

TĀTĀ

TA

TA

A

TA

TA

TA

TA

TU

TA

A WHI

plural THY

Embrace. cling to

facing towards the opposite

Teacher pupil

Old man.

PA EPAE meet & escort visitors as they arrive

PATU PATU Compete with one another

RA Rope cable cord fig LINEAGE!

SK MAORI KA U LI KA  
 KA U  
 KA HA URI  
 KA  
 HI KA HI KA  
 SK MAORI KA U LI NA  
 KA U  
 HI KA HI KA  
 SK KA U LI KA  
 RI \*  
 RI NO  
 NA

ANCESTRAL  
 ANCESTOR  
 LINE of ANCESTRY  
 DESCENDANT offspring  
 HOME  
 DIRECT LINE of DESCENT  
 BELONGING TO A NOBLE FAMILY  
 ANCESTOR  
 DIRECT Line of Descent  
 ANCESTRAL  
 BIND BOND  
 twisted cord fig of lineage  
 LINEAGE

SK 85 YU TA  
 J YA  
 YU TA KA  
 YU J YA  
 MAORI U HONO  
 YU  
 of YUJ  
 YU  
 YA UTI JED YUTE  
 MAORI TI NEI

ATTACHED FASTENED ADDED  
 UNITED COMBINED JOINED  
 CONNECTED PROVIDED WITH  
 FILLED WITH COVERED WITH  
 ACCOMPANIED BY + INS occupied with  
 performing [SACRIFICES]  
 joined connected A PAIR dress  
 GOING MOVING [cloth]  
 JOINED CONNECTED TA PAINT TAJOO CARVE  
 YAUTI VEO YUTE Write attach  
 take hold fasten draw towards oneself  
 take hold of gain possession of  
 PUSH ON TOWARDS  
 KILL DESTROY UHONO JOIN

SK 85 YUK  
 a YUT U  
 WHAKA UT E  
 UT O  
 UT A  
 U T-1 UTI  
 U TU  
 UKUUKU

in BADLY ILL  
 cease Running as Tears  
 tend care for  
 Revenge enemy  
 Beaten for burden  
 Annoy worry  
 cease Running as Tears  
 SWEEP AWAY DESTROYED





SK 855 YU SH MAYA ram only in pt p - - -  
 from YU SH MA  
 YU SH MAYAT SEEKING YOU  
 in Campes YU SH MA ADDRESSED TO YOU

A HAERE MAI WELCOME  
 U U this for him  
 MA HANA for thee  
 MA-U We two ones excluding  
 MA-U-A person spoken to  
 U say U

SK 856 YU THA herd flock troop band host  
 from YU multitude number large quantity

MARA WAKA U keep together as a body of men.  
 U TA NEATA MAN MAN man kind  
 U EPU Company party  
 U KUPARA Spread out from close order  
 U NU slip out of a crowd  
 TA-U ATTACK  
 TA-U BUNDLE  
 TAUA ARMY hostile Expedition  
 TAU-IWI foreign tribe, clan.  
 -HAO capture a fortress  
 HANGA people.  
 TA KA Company of person's  
 TA HUA - MARA  
 TA HUNA Battle field  
 TA HUA HEAP espec of food at a feast  
 -HAUHAU Strike smite  
 -HAUM Confederacy alliance  
 -HAUKAINGA home.  
 -HAUMUA placed Departed Spirits

SK 856 YE NA  
unstrum of B YA

ind BY WHOM or WHICH  
BY MEANS of WHICH  
BY WHICH WAY  
IN WHICH DIRECTION  
WHITHER WHERE  
IN WHICH MANNER  
in consequence of which  
in order that

SK 834 3 YA

actual base of the relative pronoun,  
in declension

cf YA' D  
N YA' D- TA MA  
0 MAT m. plu.  
0 ME

superlative  
who or which of many.

MAJORA  
-3 YA KA  
E  
E  
BY -A NA  
NEI  
NA

WHO WHICH?  
BY of the agent  
before verbs or adjectives followed

IND TO denote action in progress  
temporary condition in time past  
present or future

TO denote future action or condition  
= VOCATIVE O  
if when.

plural of dif. TĒNĀ THOSE near or  
connected with person spoken to

like having the form or  
appearance of.

it is better BUT. BUT rather  
on the contrary on the other hand.

his her of him of her  
continuances of action or state  
the point to which anything reaches  
the time to come

Rush change.

SK 839 YA  
A- MURI  
A- MO

a GOER MOVER WIND LIGHT JOINING GOING

SK 839  
sometimes ✓

YA  
YĀ<sub>I</sub>

MĀORU  
DI  
DI - NGA  
DI - INGA  
DI  
DI - EA EA  
DI - HO  
DI - HI KI  
DI - HO  
DI - HO RO A  
DI - HU  
DI - HU A  
DI  
DI HE  
A KE

A GOETZ MOVER WIND  
LIGHT JOINING GOING P. MUL

DRIVE URGE COMPEL

Driving force thing driven  
extension of space lapse of time  
as far as until

PANTING  
a porpoise  
FOOTSTOP MAKE HASTE  
RADIANT LIGHT  
Bright Moon light  
move in a certain direction

HASTEN  
Capulate  
Dolphin  
as forthwith thenceforth

SK 845  
part  
of

YA BIT  
YA BHATI  
YA YĀBHA  
YA BHI TUM  
YI YAPSATI  
YA BHANA  
YA BH YĀ  
YIYAPSU  
MĀORU  
AI  
A WHI  
DI WA - TA  
DI WHAI  
WHĀERERE  
PI E  
HIA  
HIKA  
WHATU  
HU

TO have sexual intercourse  
[MĀORU TINANA PREGNANT]  
[ " ATI offspring ]  
[ " PĀ COITUS ]

to desire sexual intercourse  
Capulation  
to be carnally known  
desiring sexual intercourse

TU PERE Ejaculate  
Capulate  
Embrace draw near to  
Desire  
SPOUSE [PUHI VIRGIN]  
WIFE  
DESIRE  
fall in Love with  
Capulate  
MANAWA Seat of affection  
Desire



SK 849 YA TAV YA TO BE GONE or MARCHED

YA TAV YA TĀ the necessity for setting out on a journey

TO BE MARCHED AGAINST TO BE ATTACKED

drive urge compell as far as until

DRIVING FORCE [DRIVEN]

[ DI NE A ]  
[ D NE A ] >

Come go arrive at Reach ATTACK

he she it see  
come to the assistance of  
Wellcome! COME [NEAITIAU]  
[KAI TAUU]

TAE  
TAU

IA  
TAUTA WHI  
TAUTI MAI

SK 849 YĀ TI KA a TRAVELLER going against [attack]

MAORI Ā TI KA  
KA RERE Messenger straight direct  
drive urge compell keeping a direct course

WAKA TI KA Set out on a journey  
TI RA Company of travellers  
D TI ATI drive away compell.

KAI TOA warrior  
KAI TU be at a distance  
KAI Reach arrive at

SK 849 YĀ TŪ WIND one who goes a traveller  
MAORI Ā TŪ TŪ drive urge compell as far as [until]  
a messenger

KAI TU Be at a Distance

A TU direction or motion onwards or [away]  
TU NEA SEND

TU PĀ TIU N W WIND

TU PAOE SING WHIST TRAVELLING AT NIGHT

|         |                |  |  |
|---------|----------------|--|--|
| 362 SK  | RĀ NGA         |  | A FIELD of BATTLE                              |
| 375 SK  | RĀ NA          |  | A CORRUPTION of RĀJA A KING                    |
|         | RĀ NĪ          |  | A CORRUPTION of RĀJNĪ A QUEEN                  |
| MĀORI   | RA NGA TI RA   |  | CHIEF, MALE or FEMALE                          |
| SK      | RĀ NA          |  | WAR COMBAT [as an object of Delight]           |
| MĀORI   | RĀ NGA TI RA   |  | Chief, well Born Noble.                        |
|         | RĀ NGA MĀ RO   |  | Army in Battle Array                           |
|         | NGA RA HU      |  | [Leader Commander] [take counsel.]             |
| SK      | RA NGA         |  | perform Rites over child of a                  |
| MĀORI   | RA NI          |  | A QUEEN [CHIEF]                                |
| KAHU    | RA NGI         |  | CHIEFTAINNESS HONORABLE DISTINGUISHED          |
|         | RA NG- A- TIRA |  | Chief, well Born Noble.                        |
|         | RA NEI         |  | Divine Beings                                  |
| A WHAKA | RA HA NGA      |  | Act of Leading                                 |
|         | ARA ARA        |  | Recite Genealogies                             |
|         | RA NGA TA      |  | Charge Rush.                                   |
|         | NGA RA HU      |  | war Dance Leader [Commander]                   |
| SK 364  | RA TŪ          |  | TRUE SPEECH RIVER of HEAVEN                    |
| of ✓    | RIT            |  | the Celestial Ganges                           |
| MĀORI   | RA - NEI       |  | tenor drift of Speech Chief                    |
|         | RA NEI         |  | heaven. SKY                                    |
| WHAKA   | TU             |  | FORMAL SPEECH                                  |
|         | TU AKIRI       |  | person personality                             |
|         | TŪ ATAU        |  | SPEECH SAYING                                  |
|         | TU AURI        |  | Ancient Time's                                 |
|         | RIT E          |  | performed completed fulfilled                  |
|         | TU WHIRI       |  | Reveal Disclose                                |
|         | RIT- E         |  | Like alike Balanced by an equivalent Agreed to |
|         | RIT- E- NGA    |  | CUSTOM   |

SK 855 RA TH A  
J4 RI

GOER chariot espec 2 wheeled.  
any vehicle i vehicle of the Gods.  
warrior hero body limb member

MADRU RI E  
SK 869 RA VA  
J RU

2 Roar yell clamour outcry  
[part talk noise]

MADRU RA  
RU RU  
RU RU  
A RU

ROAR  
attach  
Storm  
follow pursue.  
accuse.

VA  
RA HI  
HA ERE

Loud  
Come go

SK 870 RA VA NEA  
MADRU RA

Roar yell howling crying

WA  
WA IA TA

Roar  
accuse.  
SONG

NEA HU  
NEA RA HU

hunt with the dogs  
war Dance

SK RA HI  
RA VA TA = RA VA  
TA TA U

ROARING YELLING  
to uttered

RA  
RA U PAJU  
RA HI

Roar  
Conquest quarrel fight  
Loud

SK 865 RA TH A  
J RI  
MADRU RA

GOER chariot [espec 2 wheeled] vehicle  
vehicle of Gods warrior body limb member  
SAIL

TAU  
TAE

come to anchor  
Come go reach arrive at  
GO TRAVEL

RI PO I  
RI RI  
RI NEA  
RI O

Battle prowess warlike.  
Limb

-H AETRE

M. VIRILE  
Come go 150



SK 809  
RA S  
RA RĀ SA  
RE SUH

ROAR yell cry reverberate  
Sound scream cry out loudly

FOR A RĀ SI TA  
RA S A  
RA SA - NA

THE ACT of ROARING ITD

RASI TA

Sounding Echoing ROAR SCREAM  
Thunder noise

RASI TRI

one who roars ITD

MĀRĪ

TIR - I PĀPĀ

Explosion in succession

RA

ROAR continued low sound.

RAHI

LOUD

PA RA AWA

GALE TEMPEST

PA RA NEKI

Sound of voices in the air

RA NGI

STANZA JUNE

HU-HU-A

Call by name > HUA

PA RARE

SPEAK or CRY LOUDLY BAWL

RA NGA MA RO

Army in Battle array.

A RA

MARAUDING BAND

A RE

WHAT!

A RE RO

TONGUE

RE O

VOICE TALK ITD

RE HU

flute sing

RE HI

pleasure play.

RE

See!

RE RE

to uttered

HĀ HĀ

shout at

RA UTU PU

THUNDER STORM

PARA RE

Cry loudly. bawl.

PA RE NA TA

Reply revenge.

HŪ

Resound.

SK 809

RA SĀY ATI

FOR A RĪ RA SĀT

TITI HĀ OA

shout of joy

TI WE

SCREAM

WAHĀ RĪ KI

invading Army espec CRY of alarm!

RĪ RĪ

BATTLE COMBAT

SK 869 RA VI SHU  
 MAORI RĀ  
 RA PA  
 TA RA  
 TA RA  
 RA U PATU  
 HŪ

God of Love  
 WED  
 PUD MUL  
 M. VIRILE  
 P. MUL  
 QUARREL Fight  
 Desire

SK 864 RA S  
 MAORI O RA  
 RA  
 RA H- I  
 RA E  
 RA NA KI  
 RA  
 RA NEI NAMU  
 RA PA  
 TA RA  
 MOENKA TA RA  
 RA POI  
 RA TA  
 DeoSK RI RA SAYISHATI

to feel perceive be sensitive of  
 to love taste  
 alive living  
 wed.  
 abundant numerous loud.  
 Raw not cooked.  
 Avenge.  
 there yonder  
 handsome.  
 PUD MUL  
 M. VIRILE PUD MUL  
 marriage union till death  
 Dandle a child  
 familiar friendly  
 to desire to taste

SK 871 RA SA NĀ  
 MAORI RA E  
 HĀ  
 NĀ  
 SK RA SA NA - LIH  
 MAORI HĀ

THE TONGUE as ORGAN of TASTE  
 RAW NOT COOKED  
 taste flavour odour  
 acted on by by way of.  
 LIH LICKING WITH the TONGUE  
 taste flavour  
 RIHI FLAT [GREY SAID'S of the NOSE!  
 RIKI RIKI in small portions  
 RIPI skim along the surface [ie LICK]  
 MI RI soothe assuage tranquilize  
 rub stroke wipe

SK RA J RA  
SK 870 RA SA

giving effecting ITO  
moisture humidity mythical  
stream flowing around the Earth  
i atmosphere

THE LOWER WORLD HELL

Earth ground soil Tongue

of  
MFORZ

RA SA-KHANA

DIGGING IN the SOIL

RA SA-TALA

Earth ground soil

TA EKAI

WORN out SOIL

HA U

DEW MOISTURE

HA RO TO

pool

HA EMANEA

in names of Streams

HA

taste flavour

KARU

DIE DIG UP

TAI AO

WORLD district

TA HUNA

cultivated Soil

RA RO

= [ Down underneath down ]  
[ below UNDERWORLD ]

RA NGI

SKY [ie Rain ITO]

RA NGI

WEATHER

MA RA

GARDEN

SK 854 RA  
✓ RA

acquiring possessing giving  
effecting fine heat love speed

MARO O RA

giving  
GOING MOTION brightness splendour

RA TO

alive living  
be distributed

RA

weed

TA RA

P. MUL M. VIRILE

RA RA

Exposure to the heat of the ]

RA

SUN DAY [SOIL]

RA-KE

BARREN LAND

RA KE

BARREN LAND

TAI AO

WORLD Region

TA I

Sea tide wave rage

RA KA MAO MAO

a personification of the WIND

RA KA TU WHENUA

the Earth opposed to Sea

RA KA UMA TOHI

MOON 18th Day = Splendour Brightness

RA IHE

Fenced.

SK859

YAU TI KA  
from YU KTI

Suitable fit logical  
Reasonable connective  
Binding usual  
CUSTOMARY  
PERSON

MAORI

TI NA NA  
TI KA  
TI KA NEA

JUST FAIR RIGHT CORRECT  
RULE METHOD USUAL  
CUSTOM HABIT REASON

SK  
from  
MAORI

YA U - NA  
YO - NI  
O O O - NA  
O O O - NI

CONNECTION BY MARRIAGE  
WOMB placed BIRTH  
of belonging to  
of him of her  
COPULATE marriage

from  
MAORI

O O U - HONO

JOIN MARRY Birth  
of belonging to Relatives except HUSBAND  
YOUR THY OF YOU = Thine [WIFE]  
of HIM of HER  
ORPHAN WIDLOW  
person.

TA RU

PA NI NA  
TI NA NA  
RU NA NA  
O IHA

Connected by family ties  
LINEAGE  
GREET ONAMATA Ancient Times

SK  
fr  
MAORI

YAUSH MA KA  
YUSH MA  
U  
AU

YOUR YOURS  
Say U teat  
Your of you thine  
= inclusion of those unnecessary to ]  
MA MA - HAND for HIM for HER [name]  
MA KA U husband wife spouse

HU

AU RI

HAVING OFFSPRING

SK859  
fr  
MAORI

YAU SHI NYA  
YO SH AN  
WA HIN E  
O HIN GA  
HI NE

WOMANHOOD  
JSK YONI from U = MAORI UHA WOMAN  
wife HA KUI WIFE  
CHILDHOOD [O Relatives]  
GIRL

HU

AU RI

HAVING OFFSPRING

|          |    |          |  |  |
|----------|----|----------|--|--|
| SK MAORI | U  | SHAS     |  | DAWN MAIDEN  |
|          | U  | HA       |  | FEMALE   |
|          | U  | RA NGA   |  | Glow of Dawn   |
|          |    | HA-EATA  |  | DAWN   |
|          |    | HA-KUI   |  | wife   |
| SK355    | YU | VATI     |  | girl in RV applied to USHAS  |
|          |    |          |  | Night i morning<br>heaven i Earth  |
|          | U  | WA HI NE |  | wife   |
|          |    | HA       |  | female.  |
|          |    | HI NE    |  | girl   |
|          |    | TI NAKU  |  | Conceive   |
|          |    | TI NANA  |  | person   |
| SK221    | U  | S RAS    |  | morning Light  |
|          |    | RA       |  | Sun day  |
| MAORI    | U  | RA NGA   |  | glow of dawn DUAL  |
|          |    |          |  | also glow of sunset!   |
| SK       | U' | SRI      |  | morning light  |
|          |    | RI RI KO |  | TWY LIGHT  |
| SK221    | U  | SHAS     |  | morning light Dawn morning person feel as daughter of Heaven and sister of the ADITYAS ; NIGHT - and Evening Light |
|          | U  | SHASAU   |  | f dual night i morning }<br>{ twilight }   |
|          | U  | SHA      |  | morning light  |
| MAORI    | U  | RANGA    |  | glow of dawn ; sunset  |
|          |    | HA-EATA  |  | DAWN   |
| SK       | U  | S RA     |  | SUN DAY day break  |
| MAORI    | U  | RA - NGA |  | glow of Dawn ; sunset  |
|          |    | RA       |  | SUN DAY  |
|          |    | RA WITTI |  | Sun Rising = East  |
|          | U  | HA       |  | female   |
| also     | U  | WHA      |  |  |

|        |                 |      |        |                                       |
|--------|-----------------|------|--------|---------------------------------------|
| SK 753 | YU <sub>2</sub> |      |        | unite fasten harness yoke.            |
|        | YU              | VA   | N      | young youthful strong                 |
| from ✓ | YU <sub>2</sub> |      |        |                                       |
|        | YU              | VA   | KA     | youth                                 |
|        | YU              | VA   | TI     | girl                                  |
| MĀORI  | Ū               |      |        | firm fixed                            |
|        | Ū               |      |        | Reach land arrive by water            |
| SK 977 |                 | VA   | N      | love like desire                      |
| SK 753 | YU              | TA   |        | fastened added united combined        |
| MĀORI  | U               | TA   |        | load or man a canoe. HTO              |
|        |                 | WA   | HI     | wife                                  |
|        |                 | WA   | NA     | bud shoot seedling                    |
|        |                 | WA   | NA - U | BORN                                  |
|        |                 | WA   | NA NA  | tend carefully Nurse                  |
|        |                 | WA   |        | time <sup>Season</sup>                |
|        |                 |      | NA NU  | white discharge from navel            |
|        | Ū               |      |        | teat [of a child]                     |
|        | U               | HA   |        | female.                               |
| PĀLI   | BHA             | VA   | NA *   | mental culture Development            |
| SK     | BHA             | RA   |        | Bear Carry.                           |
| MĀORI  | U               | RAN  |        | Glow of Dawn.                         |
|        |                 | RA   | NEI    | Sky.                                  |
| SK 709 | BHA             | VA   |        | coming into existence                 |
| ✓      | BHU             |      |        | birth production arising              |
| MĀORI  | PŪ              |      |        | origin source cause [from]            |
| SK 708 | BHA             |      |        | appearance likeness Resemblance.      |
| 74 SK  | BHA             | VA   | NA *   | Coming into existence place           |
|        |                 |      |        | where anything grows, A FIELD         |
|        | BHA             | VA   | NTA    | TIME [present] [of production]        |
| SK 700 | BHA             | VITA | =      | BHUTA BECOME BEEN                     |
| MĀORI  | WA              | -I   |        | becoming acquiring shape or character |
|        | WA              | KA   |        | causative prefix [of]                 |
|        | WA              | NA   | - U    | be born.                              |
|        | WA              | NO   |        | Go proceed.                           |
|        |                 | NA   | WE     | tangled of feelings                   |
|        |                 | NA   |        | ACTION ON [BY] by oneself             |
|        | MA              | NA   | WA     | MIND PATIENCE                         |

SK 221 ✓  
 MAORŪ  
 U HŪ Bearing carrying  
 V AH female  
 W AH - I NE wife mother of children  
 WHĀ ERERE test  
 U HA female.  
 HU A progeny  
 HU A bear & fruit or flower's  
 HU AKI DAWN  
 HU AU RI having off spring  
 U test

SK 221  
 MAORŪ  
 U OH I the act of bearing carrying  
 U TI - NA KU Conceive in the  
 U HA female.  
 U TI - A mother  
 WAH - I NE wife

SK 769  
 BH AVAKA = } Being Existence  
 BH AVA  
 PARĀ RTHA - BH AVAKA EXISTING FOR  
 OTHERS  
 PA RA Blood Relative  
 RA - TA familiar friendly  
 TA - NGATA MAN MEN human.  
 RA TO be distributed  
 HANGA people  
 TA RUNA Connected by family ties  
 WHANAU family group

SK 771  
 MAORŪ  
 BH AVA NTA TIME VIRTUOUS wife  
 WHĀ ERERE wife mother of one's children.  
 WA TIME  
 NĀ NĀ tend carefully.  
 WA NINE wife  
 WHĀ I + WĀ + NĀ > Becoming + TIME + ACTED ON IT

SK 750 BHĀ  
SK 751 BHĀ NU

to shine be bright appear show <sup>26</sup> <sub>merely</sub>.  
appearance lustre brightness  
Ray of light SUN splendour  
A KING Master Lord  
a handsome wife

MĀRĪ WHA E  
WHA - I

Respectful term of address to a WOMAN  
COURT woo Becoming acquiring  
the shape or character of  
handsome good looking  
WIFE

PA I  
WHA ERE ERE  
WHA TU MANA WA

seat of affections  
a very fat bird

WHA TU RUA  
WHA WHA ATA

Moon on 3rd night  
WEAVE

> WHA TU  
WHA NA TU  
WHA ITIRI

Become  
a plumed white heron feathers  
term of address to male superior

PĀ  
PĀ HANAHANA

BLUSH smear with Red  
[eche i oil]

PA HORA  
A NU

Exposed to view  
Cold

A NU HE  
A NU HE A  
A NU HE

Sickly  
UGLY weak pinched with COLD  
marking on skin of mackerel.

HU  
HU HU  
HU NU  
HU NU I

BEAM RAY of SUN  
Decoy for an ambush.  
of HIGH RANK IMPORTANCE  
SUPERIOR.

WHAKA  
HA EA TA

pass out of sight  
Dawn.

PĀ  
HU NU  
PA HU RE  
PU NU A

Burn fire  
COME INTO SIGHT APPEAR  
Young of birds





|                                 |    |         |     |
|---------------------------------|----|---------|-----|
| SK 236<br>from ✓<br>a<br>from ✓ | o  | HA      |     |
|                                 | u  | VAH     | H   |
|                                 | u  | VA      |     |
|                                 | u  | H       |     |
|                                 | u  | NVA     |     |
|                                 | u  | H-O     |     |
|                                 | u  | ME RE   |     |
|                                 | u  | HA EATA |     |
|                                 | u  | HA ERE  |     |
|                                 | u  | HA      |     |
|                                 | u  | WAH-    | A   |
|                                 | u  | WAH-    | INE |
|                                 | u  | WA      | KA  |
|                                 | u  | HA      |     |
|                                 | u  | HA      |     |
| u                               | HI |         |     |
| u                               | HA | NA      |     |
| u                               | HO | NO      |     |
| u                               | HO | NO      |     |
| u                               | HI |         |     |
| u                               | WA | E       |     |
| SK 96<br>AND<br>SK 96           | o  | VA      |     |
|                                 | u  | V       |     |
|                                 | u  | VA      | 3   |
|                                 | u  | VA      | 2   |
|                                 | u  | WA      | KA  |

a vehicle means of bringing near  
Causing to approach.

Double canoe  
umbilical cord.  
bring to land arrive by water  
chant  
Dawn  
Come go become.  
female.  
mouth entrance  
sheet of a sail  
wife  
Canoe.

GREET GENEROSITY  
say o in answer to a CALL  
DYING Speech.  
of belonging to from [of place]  
[attaching to]  
child hood youth  
Nest  
join  
Marry.  
tattooing instrument  
LEG

To drive impell  
of you both  
put to verbs; verbal nouns  
OFF AWAY DOWN.  
DOWN FROM  
Canoe  
drive urge compell.

|       |          |           |  |
|-------|----------|-----------|--|
| SK99  | AVA-DHI  |           | ATTENTIVE, Term Limit<br>SURROUNDING DISTRICT<br>environs neighbour hood.<br>hole pit - HOLE PIT PERIOD] |
|       |          | TIH-ERU   | BAILA CANOE [OFTIME]   |
|       |          | TI NAKU   | conceived in the womb<br>bed in a garden   |
|       | A        | TI KA     | Right correct just fair  |
|       |          | TI HI     | Beginning and then<br>Dawn.  |
|       |          | TI HOI    | Noisy  |
|       |          | TI HOKA   | stuck in throat in,  |
|       |          | TI RAMA   | look for with a torch  |
|       |          | TI RI     | plant Root crops distribute  |
|       |          | TI RO     | LOOK SURVEY VIEW<br>LOOK INTO EXAMINE  |
|       |          | TI TEI    | A SPAY   |
|       |          | TI TERE   | interrupt anyone's speech correct  |
| SK99  | AVA DHI  |           | watch wait for lie - wait for  |
| MAORI |          | TI TEI    | A SPY  |
|       |          | TI RO     | look see survey view examine<br>EYE  |
|       | KANO-HI  |           |  |
| SK100 | AVA-NATI |           | Setting of luminaries  |
| MAORI |          | NAKA      | move in a certain direction  |
|       |          | TI AHO    | Emit Rays of light   |
| SK    | AVA NAKS | HATRA     | disappearance of luminaries  |
| SK125 | A HU RA  |           | the fire in the stomach  |
| MAORI |          | HU        | DESIRE   |
| SK37  | K SHI    |           | ABOARD GOING MOVING  |
| MAORI | K        | — i       | to of place. on to into Towards  |
|       |          | HI- KA    | Capulate plant   |
| SK    | K SH YA  |           | dwelling abroad  |
| MAORI | K        | A Y - NEA | abroad. dwelling   |

|                     |   |  |   |
|---------------------|---|--|---|
| SK99<br>ind p       | AVA JDO<br>AVA - DĀYA   |  | cut & divide especially<br>the sacrificial cake.<br>to cut into pieces  |
| 1st Sing<br>from    | AVA - DI SHI YA<br>AVA JDA  |  | TO present  |
| MAORI               | TA KA<br>TA<br>TO HI<br>TA KIURA<br>TA KA<br>TO F<br>TO HITU<br>TO HI<br>TO HUA<br>TO HUNGA |  | heap of food at a feast<br>cut prepare.<br>Sacred food.<br>Collect into heaps<br>Split O wide<br>Route without a break.<br>CUT DIVIDE<br>Yolked egg Roe of fish<br>DOLE OUT |
| SK99                | AVA JDHĪ  |  | watch wait for<br>lie in wait for   |
| SK99                | AVA JDHĪ  |  | attention surrounding district  |
| MAORI               | TĪ - TĒĪ<br>TĪ KA   |  | a SPY<br>keeping a direct course Right Correct  |
| SK333<br>MAORI      | KS HAI<br>K Ā<br>HA I<br>= HE I<br>HA TETE<br>HA ERE  |  | TO BURN CATCH FIRE or TAKE FIRE<br>take fire be lighted burn.<br>] at on of place ito<br>Fire<br>COME GO  |
| SK334<br>MAORI<br>= | KA KKH<br>KĀ ]<br>KĒ ]<br>KĀ EA<br>KA H- A<br>KĀ FO<br>KĀ HU                                |  | HARSH as SOUND hard solid<br>SCREECH<br>[KAHUI SWARM FLOCK]<br>WOODEN TRUMPET<br>STRONG ABLE<br>Shell of a shellfish used for CUTTING<br>HAWK                               |

|         |  |  |
|---------|--|--|
| SK 334  | KHA TA KA                                | A GO BETWEEN NEGOTIATOR<br>of MARRIAGES  |
| MARA    | KA<br>TA KA<br>TA NE                     | = WHAKA causative prefix [agent]<br>prepare<br>husband.<br>Relative by marriage<br>present given by bridegroom<br>to Relatives of the bride<br>Lover |
|         | KAI REPE REPE<br>KAI PAKU HA<br>KAI RORO |  |
|         | KA   WAENAE<br>TA E                      | MESSENGER<br>Come go reach arrive at<br>touch of feelings amount<br>[to of numbers]  |
|         | HA KUI<br>HAERE<br>HA HA                 | wife<br>Come go become [to travelling]<br>SEEK LOOK FOR Search [party]<br>ENQUIRE ABOUT PROCURE<br>Cause to come about                               |
| WHAKA - | TA E<br>TA HA KE                         | Young fellow   |
|         | TA I MAU<br>TA I PU                      | BETROTHED<br>Betroth   |
|         | TA KA<br>TA KA TU                        | WHAKAARO PROPOSE<br>prepare get Ready  |
|         | TA KA TA PUI                             | intimate companion   |
| SK      | KHA TA KA<br>TA KA - WA-E-NGA            | GO BETWEEN [of same sex]<br>GO BETWEEN<br>[MEDIATOR]   |
|         | TA KE                                    | Cause Reason meanie beginning<br>subject of discussion<br>well founded firm Lasting  |
|         | TA KINI<br>TA K-O TO                     | HYMEN<br>OANA be in a state or condition<br>be before me in the future<br>be formed as a project or scheme   |
| WHAKA   | TA KO TU<br>TA MA                        | give directions order<br>MAN Oldest son shang Emotion [R]  |

SK 334  
MFAORJ

K HA  
HA  
HA

E ATA  
E

the SUN  
DAWN  
GLEAM  
Burnt by the SUN

TI

KĀ KĀ

SK 334 ✓

K HA  
K HA

N

CAVITY HOLLOW CAVE ACTION  
aperture organ of sense. wound  
Empty space heaven sky-air

MFAORJ

K A RI  
HA RO  
HA U

DIG DIG UP  
VAULT of HEAVEN  
AIR WIND BREATH

WHA  
=

KĀ N-EKA  
KĀ ]  
KĀ RI  
KĀ EATA  
KĀ E  
KĀ N-A  
KĀ N-  
KĀ N IWHANIWHA

move progress.  
causative prefix  
cleave wound.  
Dawn  
Cause pain  
Bewitch  
O-HI EYE  
DARK a deep  
[hole in a River]

SK  
from ✓

K HA  
K HA  
K HA

N  
RO

] cavity hollow  
VAULT of HEAVEN

SK  
MFAORJ

K HA NA  
KĀ RI  
KĀ N-E  
KĀ N-  
KĀ N-

digging up  
dig dig up  
choke.  
I ASAW [MOO]  
I WHA BARBda fish hook barbed spear  
NOTCH SLOT

KĀ PU  
KĀ PU  
KĀ PU KU  
KĀ ARA MEA

Steel Edge. hollow of the hand.  
Earth up crops  
GUNWALE of a Canoe.  
Red ochre

SK339 KHĀ R VĀ

MAORU

TA KA

RU A  
VĀ

THE 2ND YUERA of the WORLD

Come Round as a date or  
time Revolution circuit

2

period of time

|        |      |    |  |
|--------|------|----|--|
| SK 348 | GA   | YA |  |
| MARA   |      | A  |  |
|        | HA   | RE |  |
|        | NEA  |    |  |
|        | WHAN | IA |  |
|        | GA   | I  |  |

HOUSE PROPERTY GOODS FAMILY  
 of belonging to possessed by  
 family  
 people property make build  
 to che it  
 feed nourish maintain Rear

|        |     |  |  |
|--------|-----|--|--|
| HAUKAI | NEA |  |  |
|--------|-----|--|--|

HOME

|        |     |    |     |
|--------|-----|----|-----|
| SK 348 | GA  | RI | MAN |
| from   | GU  | RU |     |
|        |     | RU | DRA |
| MARA   | NEA | RA | HU  |

heavyness weight importance  
 DIGNITY VENERABLENESS  
 as a VENERABLE PERSON [as RUDEA]

Leader commander  
 take counsel

|    |     |    |    |
|----|-----|----|----|
|    | NEA | RE |    |
|    | A   | RI | KI |
| RA | NEA | TI | RA |

Elders of Elder families  
 CHIEF PREIST LEADER  
 of Noble birth

|  |    |    |      |
|--|----|----|------|
|  | RU | AN | UKU  |
|  | RU | A  | HINE |