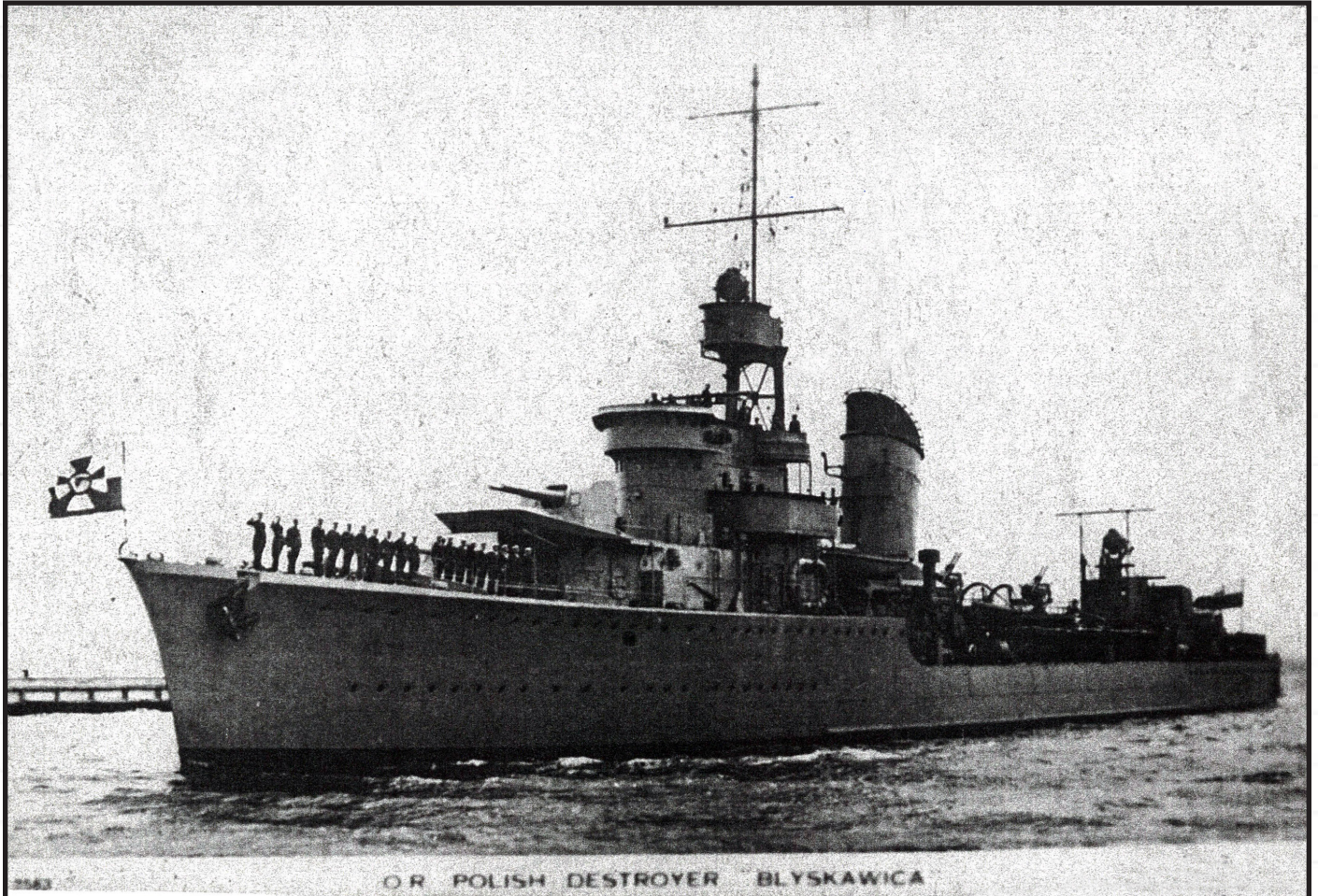


DALAMENSAAN [OLD NOTES]



S. J. Amutwanda's

F. FALETOLU-JÓZWICKI

OMAVI

All Rights Reserved

[15 pages]





Firmany?

1	HRADIA HRANICA DE DINA	plot garden space. BOUNDARY VILLAGE
2 ∞	" " " HĀM	home.
3	HAMSITTE NDE	Dwelling
4 SK	STHA	Stay Remain
5	STHĀPYA	set up erected appointed
6 ∞	HĀT	heat hot
7 SK	API DAHATI	TOUCH WITH FIRE
8 ∞	DALAMENS	PEOPLE on both sides of the ELBE
∞	DARU	hunt harm damage.
9	DIM	Dart
SK P	KUP KOPAYATI ]	SPEAK
10	KU KUTTARA KU DHARA KURUHA	the Earth MOUNTAIN SEXUAL INTERCOURSE Earth Supporter a MOUNTAIN Growing on the Earth a TREE
11	∞ DISIG KP TRI ČARIJA MĀDĀRI TIH-01	FOOLISH SILLYNESS SILLY GIGGLING

SLOVAK

H RA DA

PLOT GARDEN SPACE

H RA NICA

BORDER BOUNDARY

DE DI NA

VILLAGE SETTLEMENT

MIAORI

NI HO effective force food store

H A NEA

PROPERTY PEOPLE

MA RA

GARDEN

TI NA-KU

TUBERS FOR PLANTING CULTIVATED

NIK-O GO ROUND ABOUT [GROUND grows prot

TI NA NA

PERSON Real actual

TA RU NA

CONNECTED BY FAMILY TIES

H<sub>2</sub> A NGA

PROPERTY PEOPLE

JI PUN A

ANCESTOR

JI RA U

rich Root crops.

PA RA

BLOOD RELATIVES

A RA I

SCREEN KEEP OFFWARD OFF.

TI WATA

FENCE

RA TA

familiar friendly

TI KA NEA

Custom

TA HUNA

land in a CULTIVATION

TIE KE

Ground plan of a house.

TI AKI

Guard keep.

TI A

mother parent

TE PE

BOUNDARY LIMIT

TE TE

lie he in a position

TE WHA

Rites at planting time

TA HUA = MARAE

TA WAHA Bed in a Cultivation

TA UTE TEND he occupied

TA UTI AKI tend take care of walls of a house

TA UTANGATA Stranger

TA URIMA Hospitality to strangers

TA UPUA offering Rest

TA UNGA Be at home in a place.

TA RUNA Connected by family ties

K A NEA VILLAGE

WHAKA

NA NA REST REMAIN

TA WHA Boundary line

A RA

WAY PATH MEANS of CONVEYANCE

SLOV	H RA NI CA	BORDER BOUNDARY
	H RA DA	PLOT GARDEN SPACE
	DE DI NA	VILLAGE SETTLEMENT
MĀORI	TA HUNA	CULTIVATED LAND BATTLEFIELD
MĀORI	H A NEA	PEOPLE PROPERTY
	H A-U KA INGA	VILLAGE
	H Ā - HĀ	Desolate Deserted
	TE WHA	PLANTING RITES
	TE PE	BOUNDARY LIMIT
PA	- RA	BLOOD RELATIVES
	TI AKI	GUARD KEEP
	TI KA NEA	CUSTOM
	NI KO	GO ROUND ABOUT [KA STANOVNIK = DWELLER
	MA RA	GARDEN [= MĀORI NI KO COILED ROPE = DWELLER]
	KA-I-ĀKIRI	CIVIL WAR
	KĀ	HOME
	KA-HA	BOUNDARY LINE of LAND
KA SK	HA	
DC	HĀ NI	AWAY FROM DOWN HOME
	HĀ M	
	HĀ-M-SITENDE	DWELLING AT HOME [MĀORI HI KA =]
	MA CIAN	TO MAKE DO ACT [PLANT COPULATE]
MĀORI	MA HI	WORK DO PERFORM SEE KIA + ANGA
	ANG-A	Set about doing anything aspect
	MA KI	action done for oneself,
	KI	to of place concerning Respecting in
DC	RA CIAN	Direct Rule/RECCAN [consequence of]
MĀORI	RA NEA	TIRRA REO VOICE
	KI	Say tell call designate
DC	TE	TO
DC	TE ĀH	* AN ENCLOSURE
972 DC	TE ĀM	FAMILY offering progeny line of
MĀORI	TE WHE	* MEMBRANE of a FOETUS [descendants]
A	-TE ATE	BOSSOM
DC	SEO + TE ĀM	SEMEN
MĀORI	TA TE A	SEMEN
	TE KE	PUD MUL
	TE IA - E	M. VIRILE TEINA younger brother/sister!

SK KP

DEDINA

VILLAGE

DC

HA M S I T T E N D E

DWELLING AT HOME

SLOU

H R A N I C A

BOUNDARY BORDER

MAORI

H A N - G A

PROPERTY PEOPLE SK 1261

H A K U I

MOTHER [STHAGA] Na te Earth

H A K O R O

FATHER

H A M - O K O

THATCH of a HOUSE

KP

S T A N O V A T I

DWELL [MAORI] NOHO Remain WA default space

SK 1262

S T H A

STAY REMAIN [TINA KU GARDEN]

MAORI

[ I N O = DESCENDANT ]

TINA-KU pregnant CULTIVATED GROUND

TIKIANGA CUSTOM

TO AT or IN of PLACE

[ = HA I ]  
[ = HE I ]

A H I

FIRE Ogniatko Demony.

H A - T E T E

FIRE

H A - T E P E

→ [ proceed in orderly manner  
follow in Regular Sequence ]

H I K A H I K A

LINE of DESCENT

H I K A

Kindle fire copulate plant

H I H I

Gable of a House.

H I A T O

Be gathered Together

DC

T E A M

LINE of DESCENT FAMILY

MAORI

T E H E

M VIRILE

T E I N A

Younger brother-| sister

T E K A

foot of a digging stick

T E K E

PUD MUL

T E N E I

THIS [near] each one HERE NOW

H I A M O E

Sleepy

H I A K A I

hunger

T E P E Boundary limit

WHA KA

T E R E T E R E PLANT OUT

T E T E LIE BE IN A POSITION

T E - W H A planting RITES WHA = HA -

T E W - H A

planting Rites

H A - N A

property people.

W - H A - R E

house people in a house.

SK S T H A G A N A

THE EARTH

SK S T H A N D I L A

OPEN FIELD

MAORI H A - H A

Desolate deserted MA RA CULTIVATIONS [RAKE] BARE

SK 1262	ST HA	STAY REMAIN SUPPORT MAINTAIN
	ST HA NA	ABODE MAORI WAKA NA-NA REST REMAIN
MAORI	-T A INGA	PLACE TO BAIL A CANOE CAMP SITE
	-T A E	arrive come go Reach arrive at
	-T A - E KA	LIE [it lies there]
	-T A - E PA	FENCE enclose in a fence.
	-T A HA - U	THY
	-T A HERE	REST LIE
	-T A HU	direct line of ancestry Ridge
	-T A - HUA = MARAE	pole da HOUSE
	-T A - HU	COOK Sacred Rites
	-T A - HUA	heap of food at a feast
	-T A HUNA	LAND IN CULTIVATION
	-T AI DO	World.
	-T AI MAU	Retracted
	HA NEA	PROPERTY MAKE BUILD PEOPLE
	W HA RE	HOUSE PEOPLE IN A HOUSE
	W HA NGAI	FEED NOURISH MAINTAIN REAR
	HA MOKO	thatch fera HOUSE
AC	HA M - SI - TENDE	DWELLING AT HOME
	HI AMOE	Sleepy doze.
	TETE	lie be in a position
SLOW	HA D A	PLOT GARDEN [MAORI TAHUNA / MARA / HAR-I
MAORI	KA HA	BOUNDARY LINE of LAND
PARA	T A RUNA	Blood Relatives Connected by family ties
AC	HA M	home.
KP	HA JAT	ROOM chamber
	HA LA	SOIL
	HAMBAR	BARN warehouse
	HATAR	Territory district
	HARA - MIJA	PLUNDER MAORI HARA 1 ad 2 RANGA ITO
	ST A - D	STAND [ING] PLACE
	ST AGLINA	BUILDING
	ST ANAK	HABITATION ABODE
SK	ST HA	TO STAND STAY REMAIN
MAORI	W HA KATU	STAND [PLACE ERECT]
	T AH UA	= MARAE HANGA BUILD PROPERTY PEOPLE



KP  
SK 1263

ST A - VI TI  
ST HA PYA

PLACE  
TO BE SET UP ERECTED TO BE  
PLACED IN OR ON TO BE APPOINTED  
TO AN OFFICE STAY UP CONFINED IN  
TO BE KEPT TO AS ONES DUTY  
PLUNGED IN GRIEF RESTRAINED PLEDGE  
TO BE KEPT IN ORDER CURBED CHECKED

MPORAI

T A - NEI  
HA NGA  
HA RA  
HA KARI  
HA EORATU  
HA I  
HA KUI  
HA KORO  
HA MARURU  
HA MOKO  
HA NEI  
HA NEO

FUNERAL DIRGE CRY FOR  
MAKE BUILD PEOPLE PROPERTY  
VIOLATE TAPU SIN offence.  
Gift present feast  
high pitched da Roof  
at an in of place = HEI  
mother  
father  
shut in confined  
thatch of a house.  
Earth oven - contents of oven.  
dig plant

T A TAI  
T A HE  
T A HU  
T A KA  
T A RU NA  
T A HUA

measure arrange set in order prepare.  
Sacred food offered to a God.  
Cook Sacred Rites

P I TI  
P I TO  
P I A  
P I  
P I P I  
P I NOHI  
P I TO TOTO  
P I RAU

put side by side add.  
offering to a God.  
first order of learners of Eostoric here.  
young of birds  
young fighting men KEPT in VANGUARD  
place hot stones on food. [of an Army]  
Blood Relations  
DEATH

O

W HA NGA  
T A PI  
T A NEO  
T A PA  
T A PA E  
T A PI

NEST  
APPLY dressings to a WOUND  
take in the HAND take hold of.  
call name COMMAND  
place before a person present  
EARTH OVEN

X > H > J				
UPPER LUZ		TE PIC		LIGHT FIRE HEAT > SK DEYA FIRE as LIFT SACRED!
OC514	HĀT			HEAT HOT FERVANT FIERCE of PAIN
SK 492		DEO PYA MANA		GLOWING BLAZING
OC	HĀTE			HOTLY GLOWING
	HĀTEN			HEATED
SK 492		DE YA		TO BE LAID OR SET TO AS A FIRE JOA = MAORI
SK 626		PIT-U		FOOD [TAHU FIRE]
SK 54 PIDA	HA TI			TOUCH WITH FIRE [MAORI HĀTETE TIETIE]
OC	HĀT-WE	NOE		BURNING HOT [TAHU and TAPI OVEN]
MAORI	HĀT-ETĒ			FIRE
		WE-RA		BURNT HOT
		WEN-E-WENE		OR FACE of a WOUND ANUS
	HA-E			ENVY JEALOSY CAUSE PAIN
	HA-E-HA-E			LACERATE
	HA I HUNGA			FROST is COLD HEAT PAIN
	HANA HANA			PUD MUL NO
	HAMUTI			SHIT
	HANAINA			ULCERATED
	HAPIT			COOKING PIT
	TEHE			M. VIRILE
	TE			crack emit explosive sound.
	TEN-E			VAGINA
WHAKA	TE N-E			QUARRAL PROVOKE
	TERO			Rectum anus.
SK	HA			COITUS feat BATTLE KILLING
	HAT			SHINE BE BRIGHT
	HATHA			VIOLENCE FORCE
MAORI	HA-O			Capture a fortress
SK	HAD			TO Evacuate the bowels.
SK	HAN			strike beat till hurt wound.
MAORI	HAN-I			weapon = SK HANI weapon.
UPPER LUZ	HATOA			SMALL BRANCH [see HANI of TANE]
	TOR-A			BURN BLAZE
KP	ZES TOK			HOT
n	SARLAN			SCARLET FEVER
MAORI	TOK-AI			COPULATE
KP	HATER			pleasure delight
UPPER LUZ	HASNYC			GO OUT as a FIRE
SLOV	KAD-ILNICA			CENSOR/KAJATI BLAME REPRIMAND

SK55	API	DA	HA	TI	TOUCH WITH FIRE
SK 492		DE	YA		TO BE LAID or SET TO AS A FIRE
SK 492		DE	DI	PYAMANA	GLOWING BLAZING
SK 477		DĀ	HA	From LOAH	BURNING CONFLAGRATION
SK 477		DĀ	HU	KA	BURNING
SK 477		DĀ	HA	NA	CAUSING TO BURN
MAORI			TĪ	KĀ-KĀ	HOT BURNING
		TA	KŌ	WHĀTU	STONES FOR HEATING OVEN
		TA		PI	EARTH OVEN
	HA	TE	TĒ		FIRE
	HA	-	-	PI	COOKING PIT
			HA	TE TE	FIRE
		TA	HU		SET ON FIRE
SK	HAT				SHINE BE BRIGHT
UPPER LOZ	HA	SN	YĀ		GO OUT AS A FIRE
MAORI		TI	TI		SHINE
OC	HĀ	T			HEAT HOT FERVENT PAIN
OC	HĀ	TE			HOTLY GLOWING
OC	HĀ	TE	N		HEATED
OC	HĀ	T	WE	NDE	BURNING HOT
MAORI			WE	RA	BURNT HOT
			WE	NE-WENE	ORIFACE of a WOUND
MAORI	HA	E			Cause pain
SK				PI TU	FOOD
UPPER LOZ	TE	-		PIĆ	LIGHT A FIRE HEAT
				PIA-TA	BRIGHTNESS
				PIE	Desire Earnestly
				PIHI	prepare food.
				PIKOKO	hungry.
				PINOHĪ	place hot stones on food.
				PI O	be extinguished go out
				PI RAKĀ	FIRE WOOD
				PI RŌ	Extinguished as a fire
				PI WE RA	BURNT
	HA	NA			shine glow flame heat
		NA	WE		Be set on FIRE and of FEELINGS
			MAI	NA	KINDLE
	TI	ETĒ			Break up firewood

DC 195  
 DC 195 THE DA LA MENSAN GEN-ENA plur M  
 THE DA LA MENSAN A SLAVONIC PEOPLES WHO  
 DWELL IN MISNIA ON BOTH  
 SIDES of THE RIVER ELBE  
 BE NOR DAN EASTAN MAROARA SINDON  
 DA LA MENSAN AND THE EASTAN DALAMENSAN  
 [MS NOR DAN DA LA MEN SAM] SINDON HORITHI, AND BE  
 NOR DAN DA LA MEN SAM [MS DALOMENSAM] SINDON  
 SURPE TO THE NORTH EAST of THE MORAVIANS  
 ARE THE DALMENSAM AND TO THE EAST OF THE  
 DA LA MEN SAM ARE THE HORITHI AND TO  
 THE NORTH of the DALMENSAM ARE THE SURPE

DC MAORI DA RU HURT HARM DAMAGE  
 MAORI TA HU NA BATTLEFIELD  
 TAI RAGE VIOLENCE STRIKE  
 TAI A PU ASSAULT TAKE BY STORM.  
 TAR-A COURAGE  
 TARA KA KA FIERCE  
 TARA KE HA SHRIEK IN ALARM.  
 TARA WA HA Space between contending parties  
 - RA NEA Set in motion a body of men.  
 TA RU - KE LIE DEAD IN GREAT NUMBERS  
 DC MAORI DA RA SPEAR JAVELIN [AVENGE ON SELF]  
 MAORI TA RU - NA BE CONNECTED BY FAMILY TIES  
 TA O SPEAR JAVELIN  
 TA RU RU CROWD  
 RU TA RAGE  
 RU KE POUR FORTH DISCHARGE VENT  
 WHAKA RU KE STRIKE  
 RU ANGA TAO ward of BLOWS WITH A SPEAR  
 RU A 2 BOTH SECOND  
 RU RU ATTACK ENCLOSE  
 HANGA PROPERTY PEOPLE  
 RA ME N-E BE ASSEMBLED  
 PA RA BLOOD RELATIVES  
 RA KA U WEAPON STICK, WOODEN

SK		KO	KU	
M̄AORI	TI	MA	TĀ	Begin
ΔC	DI	M		dark obscure hidden see TĀPO
ΔC	DI	M S	CŪA	DIMNESS DARKNESS
			S CŪWA	SHADE SHADOW
M̄AORI	TI	M	ĀTĀ	Begin
A	TI			Beginning
A	TI	ĀTI		drive away [the light]?
A	TI	RU		clouds Threatening RAIN
		HĪ	-WA	DARK
		A	-KU	delay take time
		Ā	-KU	ANĒI of TIME FOLLOWING presently
		A	-KU	ĀRĀ a little while [Today]
		-KU	NI KUNI	DARK KĪĀ KUNIKUNI KĪĀ PŪĀ
		-KU	HU	Conceal. [TE MĀRAMĀ]
		-KU	PARĀ	Completely darkened as a person
Note		-KU	-RĀ	Red glowing. [fully tattooed]
SK		-KU	KSHI	in interior of anything belly cavity
		-KU	BERĀ	Lord of spirits of darkness
		-KU	BĪRĀ	a FOREST
M̄AORI	also as	KO	-	in compounds as KŌ NEU CLOUDY
				TO SPEAK [KŌREHEU DARK]
SK	KUP			SPEAK SHINE
P	KOP	ĀYĀTI		SPEAK
M̄AORI	KOP	-OU		APPOINT
	KOP	ĀNĀ		INCITE URGE
	KOP	EKĀ		DECEIVE LIE
	KO	RĀRĀ		BEG
	KO	RE		NO
WHĀKĪĀ	KO	RE		DENY
	KO	RE PE		ARCHAIC WORD for a CHIEF
	KŪ			SILENT
	KU	ĀWA		Delirium
	KŌ	RE RO		SPEAK
	KU	NĀNU		TALK 'RUBBISH,
	KUP	-U		TALK ANYTHING SAID SPEAK

SK 286

KU 2  
KU KS HI  
KUTTA RA  
KU TINA  
KU TI

THE EARTH  
'BELL', see.  
A MOUNTAIN SEXUAL INTERCOURSE  
GROUND PREPARED for a SITE  
the BODY [of PAPA]

KU PA PA  
KU<sub>2</sub> PA PA  
KU DHA RA

110 see KU 2  
SUN the EARTH  
'EARTH SUPPORTER A MOUNTAIN

KU RU HA

'GROWING from the EARTH A TREE

MORI

NU KU

THE EARTH PERSONIFIED  
IN ANTI-THESIS TO RANGI =

KO  
KO HURA  
KOI ORA  
KO KA

[sky heaven DEVA 150  
DIE for PLANT with a KO  
SPROUT UP appear above ground.  
Life  
MOTHER

KU A  
KU ORO  
KU RU  
KU RU PEI  
KU WAO

action completed condition established  
GRIND RUB DOWN  
BREADFRUIT  
CLOD [of earth]  
wild of the WOODS  
Stomach

PU KU

TA RA  
TI MA  
MA RA  
MA E  
MA NA WA

PEAK of a MOUNTAIN M. VIRILE P. MUL  
DIE PLANT  
GARDEN  
DIE UP A CROP GATHER IN  
BOWELS of the Earth

PA PA

THE EARTH EARTH FLOOR  
THE EARTH IN RELATION TO RANGI  
[RA SUN TANE = SUN

HI KA

COPULATE

RU HA

LARGE BRANCHES of TREES

HA NEA

RU RU

FOREST

HA E MA TA

STRONG GROWING

DC

DISG FOOLISH.

DISIG FOLLY

MĀORI

TĪH-OHE SILLY GIGGLING

TĪH-OI NOISY DISOBEDIENT

TĪH-Ā-HĀ ACT LIKE A MADMAN

TĪH-ĀU TWITTER,

TĪ - TĀKARO A GAME

KP

TĪ PAU SLOW CLUMSY

TĪ STITI ALARM Render UNEASY

TĪ TRANJE TRIFLING

KP

TRI ČARIJA SILLYNESS

FOOLERY

MĀORI WHAKA — HIN-D GRAND CHILDREN

HIN-E daughter girl

HIN-ENARO Seat of Emotions ]  
[ Seat of thoughts ]

HI-RAU place the hand upon a woman  
Entangle trip up.

HI-RINAKI OLD AGE